



**To Make Your Animals  
Disease Resist  
Shake Hand with REFIT**



An ISO 9001 : 2015 & GMP Certified Co.



+91 87259 42557  
+91 87259 42559



[www.refitanimalcare.com](http://www.refitanimalcare.com)



[info@refitanimalcare.com](mailto:info@refitanimalcare.com)



[www.refitanimalcare.com](http://www.refitanimalcare.com)

**Division of Cattle, Poultry & Aquatic Feed Supplements**



**Emergency**

**Solution**

- **Froathy Bloat**
- **Tympany**
- **Colic**
- **Impaction**

# Bloat-Go



Liq.



## Composition Each 10 ml. Contains :

Extract Ajwain	6.67 ml.
Pinus Longifolia Oil	1.00 ml.
Linseed Oil	2.33 ml.
Purified Hing	8.34 mg.
Yavkashar	33.33 mg.
Acacia Arabica	833.33 mg.

## FEEDING SCHEDULE :

Cattle / Buffalo : 100 ml.

Calf : 50 ml.

Sheep / Goat : 20 ml.

Administer orally as drench or intrauminally by using cannula or a long needle or as directed by veterinarian.

**PRESENTATION :**  
**100 ml.**



[www.refitanimalcare.com](http://www.refitanimalcare.com)

# CALF SAKHA

TONIC FOR CALVES TO CURE ANEMIA & WEAKNESS



छोटे बछड़ों/बछड़ीयों  
के सम्पूर्ण विकास  
के लिए उत्तम टोनिक

## BENEFITS :

- Faster weight gain
- Prevent vitamin deficiency & malnutrition in calves
- Improves body immunity & Iron deficiency
- Improves overall growth

## FEEDING SCHEDULE :

5-10 ml. twice a day or  
as directed by the veterinarian

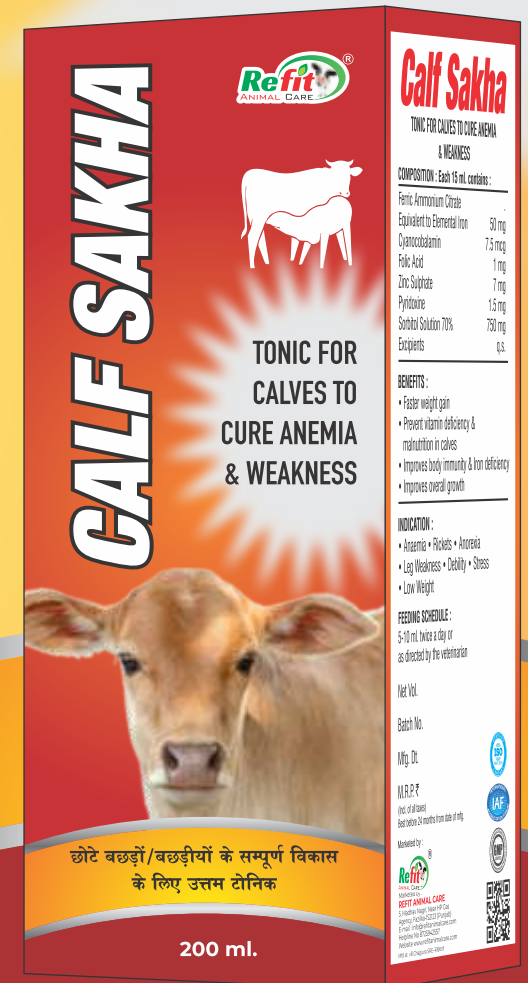


## COMPOSITION : Each 15 ml. contains :

Ferric Ammonium Citrate	.
Equivalent to Elemental Iron	50 mg
Cyanocobalamin	7.5 mcg
Folic Acid	1 mg
Zinc Sulphate	7 mg
Pyridoxine	1.5 mg
Sorbitol Solution 70%	750 mg
Excipients	q.s.

## INDICATION :

- Anaemia • Rickets • Anorexia
- Leg Weakness • Debility • Stress
- Low Weight



Pack : 200 ml.

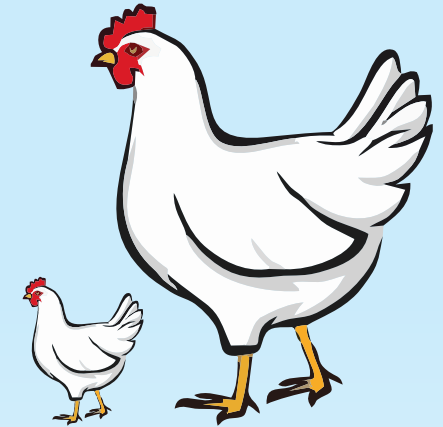


www.refitanimalcare.com



# CB-Plex

Tonic



A special Mixture of B-Complex & Vitamin C  
**FOR CATTLE & POULTRY**

**ADVANTAGE :**

- It is useful in anaemia, muscles weakness
- Diarrhoea, Heat stroke & stress
- Improve FCR, weight gain  
Egg Production in layer
- Protects from C.R.D., Salmonella infection
- Prevents early chick mortality

**INDICATIONS :**

Supportive therapy in various infection  
Decreased feed intake

**FEEDING SCHEDULE :**

Cattle : 20 ml. daily  
Chick : 10-15 ml./100 birds  
Growers : 15-20 ml./100 birds  
Layers/Broilers : 15-20 ml./100 birds



**COMPOSITION**

**Each 100 ml. contains :**

Vitamin B2	13.50 mg.
Vitamin B6	65 mcg.
Vitamin B12	50 mg.
Choline Chloride	55 mg.
DL-methioene	6.20 mg.
Nicotinamide	375 mg.
Calcium-D-Pentothenate	30 mg.
Vitamin C	5 mg.
Nutritive Base	q.s.

**Packing :**

1 Ltr. & 5 Ltr.



**DOUBLE STRENGTH FORMULA**

www.refitanimalcare.com

## Composition :

Each ml. contains :

Activated Charcoal	500 mg.
Osmotic Laxative	500 mg.
Metamucii	500 mg.
Excipients	q.s.

## Feeding Schedule :

Large Animal : 1-2 ml./Kg. body weight.  
(500 ml. as One Dose)  
Small Animal : 1-2 ml./Kg. body weight  
Repeat after 12 hours or as needed.

## INDICATIONS :

- \* Poisoning due to insecticides, herbicides, organic chemicals and drug overdose.
- \* Digestive upsets : Impaction, Bloat & Tympany.



# C & L

LIQUID

ACIDOSIS

POISONING

IMPACTION

BLOAT

GAS

INDIGESTION

Packing: 500 ml.

## सी & एल

Activated Charcoal Epsom Salt, Mineral  
with Osmotic Laxative Suspension



www.refitanimalcare.com

Fortified  
With  
Magnesium



Chelated

# DOODHRUN

Oral Liquid Calcium

CALCIUM, MAGNESIUM, PHOSPHORUS,  
VITAMIN B<sub>12</sub>, VITAMIN D<sub>3</sub>

दूध बढ़ाने का फार्मूला

## COMPOSITION:

Nutritional Value per 100 ml

Calcium	1,650 mg
Magnesium	100 mg
Phosphorus	850 mg
Vitamin B <sub>12</sub>	100 mcg
Vitamin D <sub>3</sub>	8000 IU
Carbohydrates	20,000 mg



## BENEFITS

1. Optimizing nutrition for increased milk yield.
2. Boosts Energy metabolism.
3. Enhances Immune system.
4. Improves Reproduction.
5. Improves Overall health.

## Direction for use:

Cattle: 100 ml. daily  
Calves/Sheep/Goat: 20-25 ml.  
twice daily

**PACKING : 5 LTR**



www.refitanimalcare.com

# Diarovet

## Balanced Animal Feed Supplement



### INDICATIONS

- Acute or Chronic diarrhoea of varying aetiology
- Dysentery
- Summer Diarrhoea
- White scores in young calves

### RECOMMENDED USAGE :

Cow/Buffalo/Horse : 40 - 80 gm.

Calves/Sheep/Goat/Colts : 20 - 40 gm.

Administer orally with plain or rice water thrice daily



### COMPOSITION : Each 100 gm. contains :

Punica Grantum	12.0 gm.
Aegle Mamilos	11.9 gm.
Tinospora Cardifolia	6.5 gm.
Cyperus Rotundus	3.5 gm.
Acacia Catechu	3.5 gm.
Holarrheria Antidysenterica	4.0 gm.
Salmalia Malaberica	1.7 gm.
Calotropis Procera	2.0 gm.
Berberis Aristata	6.9 gm.
Heliclers Isora	2.0 gm.
Allium Sativum	1.0 gm.
Woodfordia Fruticosas	7.6 gm.

**ANTI-DIARRHOEAL  
HERBAL POWDER**

**Packing :  
200 gm.**



# DigoPlus

## DIGESTIVE POWDER



### BENEFITS :

- Corrects indigestion & anorexia.
- Maintains proper appetite.
- Helps in proper maintenance of energy production.
- Checks impaction, mild colic & atony of rumen.
- Improves debility & convalescence of animal.
- Helps in rejuvenation of ruminal microflora.

### USAGE :

Large Animal : 20-25 gm. twice daily  
Small Animal : 10 gm. twice daily



### Composition : Each 100 gm. contains :

Fermented live yeast culture with	.
feed & fiber digesting enzymes	33.5 gm.
Bacillus Amyloliquefaciens	13.5 billion CFU
Bacillus subtilis	13.5 billion CFU
Lactobacillus Acidophilus	2.5 gm.
Aspergillus oryzae	5 gm.
Propionibacterium Freudenreichii	13.5 billion CFU
HSCAS base	
(Hydrated sodium calcium Alumino Silicate)	q.s.

**Packing :**  
**300 gm.**

तंदरुस्त पाचन शक्ति के लिए







# Chelated Enriched Formula Doodh Flow

Fortified with Metho Chelated Minerals & Herbs



## ADVANTAGES :

- Improves the milk production
- Improves the growth rate in young ones
- Prevents milk-fever, rickets, osteoporosis
- Prevents calcium deficiency during lactation
- Helps to form strong bones
- Prevents negative energy balance

## FEEDING SCHEDULE :

Cow, Buffalo, Horse & Camel :  
50 to 100 ml. daily  
Sheep, Goat & Calf :  
10 to 20 ml. daily  
Calves : 20 ml twice a daily



## COMPOSITION : EACH 100 ML. CONTAINS :

Calcium	7200 mg
Phosphorus	3600 mg
Vitamin A	14400 IU
Vitamin D3	15000 IU
Vitamin B12	150 mcg
Vitamin E	50 mg
Vitamin H (Biotin)	5 mg
Chelated Zinc	1600 mg
Potassium Iodide	300 mg
Chelated Copper	200 mg
Silymarine	600 mg
Jivanti	1000 mg
Shatavari	1000 mg
Dextrose	1000 mg
Energy Value	670 K.J.
Milk Enhancing Herbal Ext.	q.s.
Bifidogenic Factors	q.s.

## Packing :

1, 2, 5, 10 & 20 Ltr.



[www.refitanimalcare.com](http://www.refitanimalcare.com)

**Powerful Triple Strength Formula**

Low Milk Production

Low FAT & SNF

Infertility

Better health, performance & productivity of pigs

Solution is One

GLYCINE CHELATED

**DOODHGAIN**

**FORTE**



COMPOSITION		
<b>MICRO MINERALS</b>		<b>LIVE YEAST CULTURE</b>
Calcium	300 gm	Live lactobacillus
Phosphorus	1500 mg	spores
		200 million
<b>TRACEMINERALS</b>		<b>VITAMINS</b>
Copper	3.5 gm	Vit A.
Cobalt	150 mg	Vit D3
Iron	2 gm	Vit E
Iodine	500 mg	Vit K
Manganese	3 gm	Vit B12
Sodium salenite	10 mg	Choline Chloride
Zinc	2 gm	Nicotinamide
Bioactive chromium	20 mg	<b>ENZYME COMPLEX</b>
<b>AMINO ACIDS</b>		Xylanase, Alpha amylase, Betaamylase, Trypsin
L-lysine	1000 mg	<b>PROBIOTICS</b> Propionobacterium freudenreichii
DI Methionine	200 mg	Saccharomyces
<b>HERBS</b>		cervisiae
Asparagus rahcemosus	50 gm	Lactobacillus
		12000 million cfu
		6000 million cfu



Faster Results



Glycinated Minerals

Vitamins

Probiotics Trace Minerals

Enzyme Complex

**Packing:** 1, 5, 10 & 20 Kg.

**USAGE :** Calves 10 to 20 gm per day

Cattle 30 gm per day in feed

Swine : 25 gm. per day in feed

Poultry : 2 gm./100 birds

MIXING RATIO 1 % in cattle feed



www.refitanimalcare.com

**Glycine Chelated Mineral Mixture for Cattle, Poultry & Swine**

# Dr Uterine

**Uterus Cleaning**



• Ecboolic



**Retention of Placenta**

**जैर गिराने व  
सफल गर्भधान हेतु**

## INDICATIONS :

- Induces Heat in cow & Buffaloes
- Maintains proper & timely involution of uterus
- Helps in timely expulsion of placenta
- Post-partum cleansing of uterus.
- Useful in ROP cases

## FEEDING SCHEDULE :

**Cows & Buffalo** : 100 ml. twice daily for 3-5 days

**Sheep/Goat** : 30-40 ml. twice daily for 3-5 days

**in case of retained placenta**

Give 200 ml. & repeated every 3 hr. until the Placenta expelled out.

## EACH 5ML OF CONTAINS :

Citrullus colocyntis	250 mg
Hemidesmus indicus	10 mg
Hibiscus rosa sinensis	10 mg
Acacia catechu	10 mg
Holarrhena antidysenterica	5 mg
Embelia ribes	5 mg
Tinospora cordifolia	5 mg
Aristolochia indica	250 mg
Cedrus deodara	150 mg
Dashmool	100 mg
Syzygium cuminii	40 mg
Asparagus racemosa	40 mg
Glycyrrhiza glabara	15 mg
Azadirachta indica	15 mg
Ceiba pentandra	10 mg
Sida corodifolia	10 mg
Withania somnifera	40 mg
Symplocos recemosa	20 mg
Terminalia chebula	20 mg
Terminalia bellirica	20 mg
Phyllanthus emblica	20 mg
Phyllanthus niruri	15 mg
Calcium	100 mg
Phosphorus	50 mg
Syrupy base	q.s.

## CATTLE FEED SUPPLEMENT

# Uterine Tonic For Cattle



**Presentations :**

**500 ml. & 1 Ltr.**



# MILK BOOSTING GRANULES FOR LIVESTOCK ANIMALS

## Benefits :

- Improves Milk Production
- Increase Milk Fat% & SNF Rate
- Useful in Milk fever cases
- Improves swine growth rate
- Useful in pica
- Improves calcium level in body

**More Milk**

**More Fat**

## Each 5 gm. Contains

Microcrystalline Hydroxyapatite Complex (MCHC) equivalent to	
Calcium	210 mg.
Phosphorus	105 mg
Vitamin-D	600 IU
Folic Acid	120 mg



# DoodhYodha

## Dana



**Packing:**  
1 Kg, 5 Kg, 10 Kg & 20 Kg.

## Feeding Schedule :

Large Animal : 50 gm. daily  
Small Animal : 20 gm. daily  
Sheep/Goat/Swine : 10-20 gm. daily  
or Through Feed 10 kg/ton of feed  
or as directed by the veterinarian



[www.refitanimalcare.com](http://www.refitanimalcare.com)



# Fertidom

Powder



## Composition : Each Kg. contains

Copper	20 gm.
Cobalt	200 mg
Iodine	350 mg
Iron	30 mg
Magnesium	30 mg
Manganese	30 mg
Potassium	150 mg
Sodium	6 mg
Sulphur	6 mg
Zinc	120 gm
Calcium	33%
Herbs Ext.	5%
Excipients	q.s.

## Benefits :

- Wound Healing
- Anti Stress Supplement
- Calf Growth
- Milk Enhancer
- Heat Inducer
- Shiny Skin Coat

## FEEDING SCHEDULE :

**Large Animal** : 50 gm. daily

**Small Animal** : 30 gm. daily

**Calf** : 20-30 gm. daily

**Swine/Sheep/Goat** : 30 gm. daily  
or 1-2 kg./ton of feed  
or as directed by the veterinarian

## Packing:

1 Kg, 5 Kg, 10 Kg & 20 Kg.

**HIGH  
BIOAVAILABILITY  
MINERALS FOR  
CATTLE & CALF**





# FITPHYTE GRANULES



**EACH GM CONTAINS:**

**Phytase – 5000 units**

## FEEDING SCHEDULE :

**Swine :** 150-200 gm./ton of feed

**Poultry :** 75 - 150 gm./ton of feed

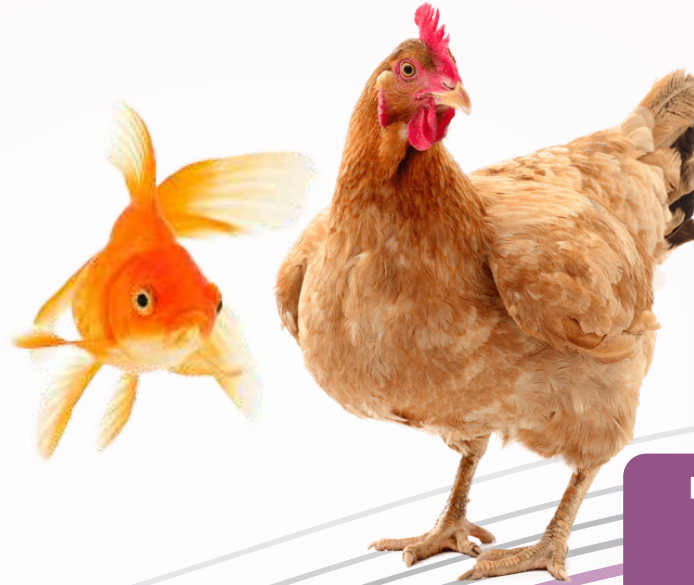
**Fish :** 10-20 gm. per kg feed  
or as directed by veterinarian

IN POULTRY, SWINE & AQUATIC ANIMALS

# 5000

OPTIMISES THE UTILISATION OF AVAILABLE  
BOUND PHOSPHORUS (PHYTIC ACID) IN FEED.

## PHYTASE ENZYME



## Benefits

**Poultry :** Increases availability of Phosphorus ,Calcium and Amino acids in poultry.  
Increases body weight gain, feed intake efficiency and overall performance and growth in broiler chickens.  
It increases AME and TME.

It increases the availability of phosphorus in the body and decreases its excretion.  
It increases feed intake and egg production , shell thickness and egg weight.

**Swine**  
It minimize is the excretion of phosphorus from the body in swine.  
It improves the ileal digestibility of all nutritional parameters.  
Required for proper growth and weight gain.

**Fish :** It converts phytic acid into phosphorus which is required for shrimps exoskeleton & cellular metabolism  
Reduces eutrophication caused by undigested phosphorus excretion by shrimps.



**Packing:**  
1 Kg, 5 Kg,  
10 Kg & 20 Kg.

## FOR BETTER PHOSPHORUS ABSORPTION



www.refitanimalcare.com



www.refitanimalcare.com

# Vet GlyciGen<sup>+</sup>



## GLYCINE CHELATED TRACE MINERALS

### RECOMMENDED USAGE

- Repeat Breeding • Anoestrus
- Udder Growth • Hoof health
- Prevention of Mastitis
- Wound Healing
- Stress condition
- Prevention of Uterine Infections

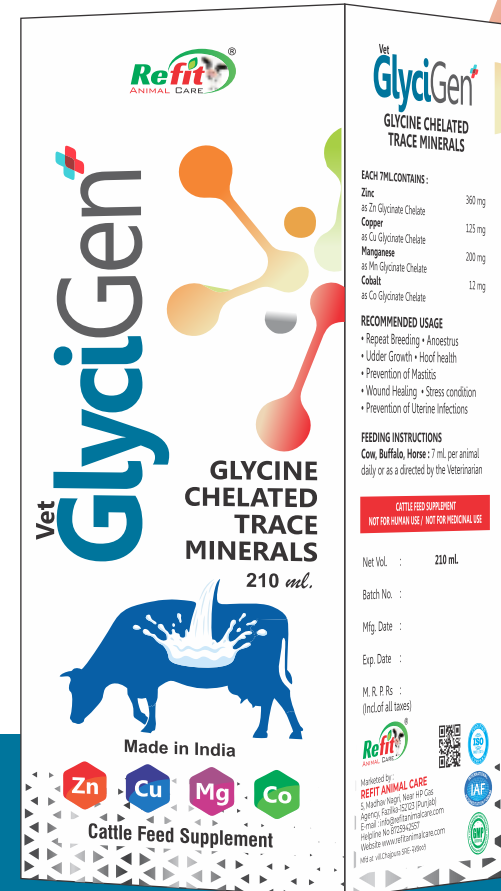
### FEEDING INSTRUCTIONS

**Cow, Buffalo, Horse** : 10 ml. per animal daily or as a directed by the Veterinarian

### EACH 7ML.CONTAINS :

- Zinc** 360 mg as Zn Glycinate Chelate
- Copper** 125 mg as Cu Glycinate Chelate
- Manganese** 200 mg as Mn Glycinate Chelate
- Cobalt** 12 mg as Co Glycinate Chelate

**PRESENTATION :**  
210 ml.



To maintain Hormonal cycle of 21 days



Cattle Feed Supplement



Metho Chelated

# GroBest

Forte



**Growth Promoter cum Mineral Mixture for Swine, Cattle, Poultry & Fishes**

## BENEFITS

- Increases milk production & Fat optimum
- Useful in Hematuria, Hemoglobinurea, Leucoderma, Pica, Worm infestation, milk fever, General Weakness & Prolapse
- Helpful for Non specific infertility
- For Healthy Growth of foetus during pregnancy
- Helps in Reducing Calcium, Phosphorus & Mineral deficiency diseases such as Rickets, Osteomalacia, Stunted Growth, Muscular dystrophy

## FEEDING SCHEDULE :

Cow/Buffalo/Pig : 30-50 gm per day  
 Calf/Sheep/Goat : 20-30 gm per day  
 Fish : 5 kg per ton of feed  
 Swine : 3 kg per quintal of feed  
 Poultry : 2 kg per quintal kg of feed  
 or as directed by veterinarian



## NUTRITIONAL VALUE/KG. (WHEN PACKED)

### Fat Solution Vitamins

Vitamin A 1200000 I.U.  
 Vitamin D3 200000 I.U.  
 Vitamin E 1000 mg.

### Water Soluble Vitamins

Vitamin B1 1300 mg.  
 Vitamin B2 600 mg.  
 Vitamin B12 3000 mcg.  
 Vitamin H (Biotin) 100 mg.

### MINERALS

Calcium 250 gms.  
 Phosphorus 125 gms.  
**Trace Minerals (Chelated)**  
 Copper 5500 mg.  
 Cobalt 150 mg.  
 Iron 2500 mg.  
 Iodine 500 mg.  
 Manganese 3500 mg.  
 Sod Selenite 10 mg.  
 Zinc 2500 mg.

### Acids

L-Lysine 1500 mg.  
 DL- methionine 200 mg.

### Herbs

Asparagus Racemosus 50 mg.

### Probiotics

Saccharomyces  
 Cerevisiae Sc-47 1200 million CFU  
 Saccharomyces Boulardi 750 million CFU  
 Lactobacillus Acidophils 750 million CFU  
 Propionibacterium Freudenreichii 750 million CFU  
 Bypass fat 50 gm.  
 Bypass Protein 20 gm.  
 Sea Weed Powder 10 gm.

### Enzyme complex

Phytase 2.5%  
 (Xylanase, Galactomannase, Alpha Amylase, Beta Amylase, Trypsin)

## PRESENTATION :

1, 5, 10, 20 & 25 Kg.



www.refitanimalcare.com

**WITH EXTRA POWER OF BYPASS FAT, VITAMIN H (BIOTIN) TO IMPROVE FAT, SNF AND TO MAINTAIN BEST REPRODUCTIVE HEALTH**



# GROSTONE FORTE

**Mineral mixture cum Growth promoter for  
Cattle, Poultry, Swine and Fishes**

## BENEFITS :

- Improves fertility rate
- Reduces inter calving period
- Improves milk production, Fat & SNF
- Enhances growth & immune function
- Improves gill function
- Adds essential electrolytes
- Promotes diseases recovery
- Enhances egg production in POULTRY



## COMPOSITION :

### EACH KG. CONTAINS

Vitamin A	700000 IU
Vitamin D3	7000 IU
Vitamin E	250 IU
Nicotinamide	1000 mg
Copper	5000 mg
Cobalt	150 mg
Magnesium	6000 mg
Manganese	1500 mg
Potassium	100 mg
Selenium	20 mg
Sodium	5.9 mg
Sulphur	0.75%
Iron	1500 mg
Zinc	9600 mg
Iodine	325 mg
Calcium	25.50%
Phosphorus	12.75%
Base	q.s.

## FEEDING SCHEDULE :

**Large Animal : 50-70 gm. daily**

**Small Animal : 20-30 gm. daily**

**Aqua : 1 gm. per Kg. of feed**

**or as directed by the veterinarian**



**Packing : 1 Kg, 5 Kg, 10 Kg & 20 Kg**





# Chelated Gro

# wix

## Forte



### Oral Liquid with Amino acids, Choline chloride Vitamins & Protected Minerals

#### INDICATIONS :

- Improves growth and body weight
- Prevents production failure related to nutrition deficiencies
- To overcome stress including heat stress reduces incidence of mastitis & ensures faster recovery
- Boost up immune function by increasing activity of B & T lymphocytes and Macrophages.
- Improves Size and Quality of eggs.
- Improves Fertility, Hatchability of female breeders.

#### COMPOSITIONS :

Each 500 ml. contains :

Methionine Activity (MHA)	130 g
Lysine Hydrochloride	65 g
Choline Chloride	65 g
Sodium	460 mg
Phosphorus	150 mg
Magnesium	600 mg
Zinc	215 mg
Iron (Ferrous)	225 mg
Copper	160 mg
Cobalt	225 mg
Manganese	400 mg
Selenium	5 mg
Biotine	120 mg
Vitamin B12	120 mg
Inositol	625 mg

Base enriched with phospholipids

#### FEEDING SCHEDULE :

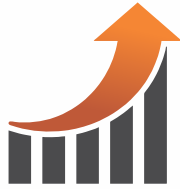
Cattle & Buffalo : 15 ml. daily/animal  
 Sheep/Goat : 5 ml. daily/animal  
 Chicks : 2-4 ml. daily/Litre of water  
 Broilers : 1-2 ml. daily/Litre of water



Packing :  
1 Ltr. & 5 Ltr.



[www.refitanimalcare.com](http://www.refitanimalcare.com)



# HEIF-GROW

**Ensures Timely Onset Of Puberty**



बछड़े व बछड़ियों के  
सम्पूर्ण विकास के लिए

## INDICATIONS :

- Delayed Puberty & Maturity (Male & Female)
- Decreased Reproductive Performance
- Reduced Sperm Quality & Quantity
- Lower body Growth
- Low body weight in Dam & Sire
- Improve calf growth

## FEEDING SCHEDULE :

Cattle & Buffaloes : 40 gm. daily mixed in feed  
or as directed by the veterinarian.



## NUTRITIONAL VALUE PER 1 KG.

Di-Calcium Phosphate	300 gm.
Zinc Amino Acid Chelate	8 gm.
Manganese Amino Acid Chelate	3.5 gm.
Copper Amino Acid Chelate	0.5 gm.
Vitamin A	1000000 I.U.
Vitamin D3	200000 I.U.
Vitamin E	800 I.U.
Fermented Yeast Culture	60 gm.
Fortified with (Omega 3 & 6 Fatty Acid)	
Curcuma Longa	25 gm.
Base	q.s.



## PRESENTATION :

1 Kg, 5 Kg, 10 kg & 20 Kg.



**Heifer And Calf Growth Promoter**  
Facilitates proper development of Reproductive Organs



# Hemliv<sup>+</sup>



www.refitanimalcare.com

## INDICATIONS :

Hepatic Dysfunction, Low appetite, Hepatitis, Jaundice, Anemia, Cirrhosis, of Liver, Fatty Liver, Syndrome, Anorexia due to sluggish Liver, Supportive therapy in Antibiotic and Antiparasitic drug therapy.

## DIRECTION FOR USE:

Large Animals : 100 ml. Daily  
Pig/Goat : 50 ml. Daily  
Chicks & Growers : 10 ml./100 birds Daily  
Layers : 20 ml./100 Birds Daily  
or as directed by the veterinarian

## IRON ENRICHED LIVER TONIC for swine, Cattle, Poultry & Livestock



## COMPOSITION

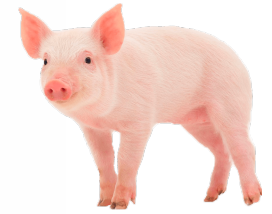
Each 60 ml. contains :

Ferrous Gluconate	400 mg.
Ferrous Chloride	160 mg.
Thiamine Hydrochloride	10 mg.
Riboflavin	10 mg.
Nicotinic Acid	40 mg.
Nicotinamide	90 mg.
Choline Chloride	60 mg.
Calcium Lactate	600 mg.
Liver Fraction 2	350 mg.
(derived from 3.75 gm of fresh liver)	
Silymarin	350 mg.
(in a flavored & Syrupy base)	q.s.

## PRESENTATION :

1 Ltr, 2 Ltr. & 5 Ltr.

**Liver Tonic with Iron, Silymarin & Liver function Enhancing Vitamins & Minerals**



## INDICATION

Iron Deficiency in Piglet

Haemoprotozoan diseases.

Iron Deficiency in Poultry

Malt Based Vitamins, Iron,  
Copper & Calcium  
Supplement for  
Cattle, Poultry & Swine

COMPOSITION : EACH 21 GM. CONTAINS

Malt Extract	4.52 gm.
Calcium Gluconate	360 mg.
Ferric Ammonium Citrate (Eq. To 64.5 Mg. of Iron)	300 mg.
Copper Sulphate	100 mg.
Cobalt Sulphate	1.5 mg.
Zinc Sulphate	50 mg.
Cholecalciferol	3600 I.U.
Nicotinamide	45 mg.
Biotin	75 mcg.
Folic Acid	1.5 mg.
Choline Chloride	1500 mg.
Liver Extract	200 mg.
Cynocobalamin	15 mcg.
Base	q.s.

## FEEDING SCHEDULE :

Cattle, Buffalo, and Horses : 30-50 gm. daily

Calves, Sheep, and Goats : 10-20 gm. daily

Camel : 10 gm. per 100 kg. of body weight

Swine : 25-30 gm. daily

Grower : 5-10 gm. daily

Poultry : 30-40 gm. per 100 birds

in drinking water



## PACKING :

450 gm. & 2.5 Kg.



www.refitanimalcare.com



**Packing : 1 Ltr.**



# Immuno-XL



www.refitanimalcare.com



**IMMUNITY BOOSTER**  
*Provides immunity against viral & Bacterial infections*



**POWERFUL ANTIOXIDANT**  
*Provides strength to livestock*



**ENERGY BOOSTER**  
*Increase milk production & Maintains Energy balance of body*

**COMPOSITION : EACH 100 ML. CONTAINS :**

Calcium Propionate	2000 mg
Glycerin	30 ml
Safed Musali	8000 mg
Niacinamide	5000 mg
Calcium lactate	5000 mg
BHA	50 mg
Base	q.s.

**BENEFITS ;**

- Multi Gluconeogenic Precursors
- Helps in Glucose Metabolism
- Promotes liberation of energy from glucose
- Improves milk production
- Improves growth & performance
- Improves resistance response to stress & infections

**DIRECTION FOR USE :**

Cattle/Buffalo : 100 - 200 ml. daily

Calf/Sheep/Goat : 10-30 ml. daily

Poultry & Swine :

1000 ml. per 1000 Ltr. of drinking water  
or as directed by the veterinarian

**Immunity & Energy Booster for Cow, Buffalo & Livestock Animals**





# LFC

## Livestock Feed Concentrate

*Useful in Repeat Breeding*

Milk & Fat Boosting in cattle

Egg production & weight gainer in poultry

Weight gainer for goat

Growth promoter for fishes

### BENEFITS:



**Cattle :** • Increase Milk yield by 10-15%

• Increase Fat & Protein of Milk

• Reduces Stress & Prevents metabolic disorders



**Horse :** • Growth & Development of skeletal system

• Instant Energy source

• Improves skin coat luster



**Poultry & Goat/Sheep :** • Provides optimum nutrition

• Immunity Booster & Weight gainer

• Reduces mortality due to malnutrition



**Fishes :** • Growth promoter

### FEEDING SCHEDULE :

**Cattle/Horse :** 10-15 gm. daily

**Calf/Sheep/Goat :** 5-7 gm. daily

**Poultry :** 250 gm./ton of feed

**Fish :** 1 gm. per 1000 gm. of feed

or as directed by the veterinarian



**PACKING :** 500 gm.

### NUTRITIONAL FACTS EACH 1000 GM. CONTAINS

Carbohydrates	300 gm.	Vitamin B12	90 mg.
Protein	100 gm.	Vitamin B5	50 mg.
Fibre	75 gm.	Calcium	120 gm.
Fat	40 gm.	Phosphorus	90 gm.
Omega 9	20 mg.	Choline	75 gm.
Omega 6	4.5 mg.	Sodium	3 gm.
Omega 3	0.75 mg.	Chloride	2.5 gm.
Vitamin A	500000 IU	Potassium	1.5 gm.
Vitamin D	50000 IU	Magnesium	1.5 gm.
Vitamin B9	450 mg.	Manganese	1 gm.
Vitamin B3	360 mg.	Iron	600 gm.
Vitamin C	250 mg.	Copper	325 gm.
Vitamin B1	180 mg.	Zinc	120 gm.
Vitamin B2	180 mg.	Iodin	60 gm.
Vitamin E	125 mg.	Cobalt	20 gm.
Vitamin B6	90 mg.	Selenium	20 gm.

Enriched with Prebiotics, Probiotics, Enzymes as cellulase, Amylase, protease, Xylanase Pectinase, B. Glucanase, Lipase, Phytase & Mannase

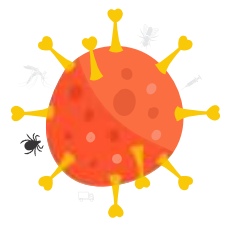
## Cattle/Poultry/Sheep/Goat/Horse/Fish Feed Supplement



www.refitanimalcare.com

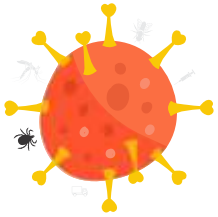


# Lumpy-Hit



## BENEFITS :

- Effective in Lumpy Skin Disorders
- Enhances immunity & Performance
- Increases the production of platelets
- Helps to rebuild damaged tissue & Heal wounds in LSD

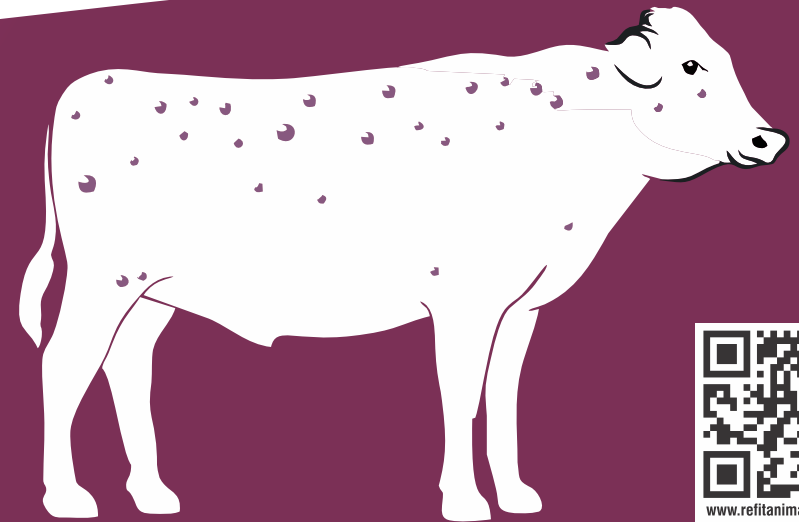


Packing : 1 Ltr



**EACH 30 ML. CONTAINS :**  
Extract Derived from Herbs :

Turmeric	1500 mg	Ferrous Gluconate	45 mg
Ashwagandha	200 mg	Vitamin C	50 mg
Sahjan	100 mg	Betain	20 mg
Tulsi	80 mg	Dextrose	100 mg
Amla	120 mg	Calcium Lactate	15 mg
Punarnava	100 mg	Carrot Seed	200 mg
Alovera	100 mg	Yeast Bran	200 mg
Yashit	100 mg	Wheat Germ	200 mg
Neem Giloy	250 mg	Vit E	50 mg
Kali Mirch	150 mg	Zinc	80 mg
Brahmi	200 mg	Tricholine Citrate	350 mg
Bhui Amla	200 mg	Liver Ext.	500 mg
Kal Megh	230 mg	Aqua Base	q.s.
Spinach	150 mg		



**Lumpy Skin Disease Treatment Supplement for Cow**





# LivoZip



## ANTIFUNGAL LIVER TONIC

Liver protector and Rejuvenator

### USES

- Prevents Liver damage due to Mycotoxins, Pesticide residues and Bacterial toxins
- Stimulate Liver functions and protects liver and accerlate recovery
- Rejuvenates Hepatic cells and Restores Liver to normal function
- Increases immunity
- Increase FCR



### EACH 10 ML CONTAINS

Tricholine citrate 2000 mg, Choline chloride 1000 mg, Inositol 25 mg, Biotin 50 mcg, L-lysine 125 mg, DL methionine 125 mg, Vit B12 100 mcg, Glycine 20 mg, Citric acid 10 mg, Potassium chloride 15 mg, Vitamin E 20 mg, Selenium 10 mcg, Silymarine complex 300 mg, Zinc sulphate 10 mg, Methyl donor 150 mg, Liver extract 225 mg, Base fortified with predigested protein and Amino nitrogen

### FEEDING SCHEDULE

Poultry (100 birds)  
 Chicks : 5 ml daily  
 Layers 20 ml daily  
 Breeders 25 ml daily  
 Large Animal : 50-100 ml. daily  
 Small Animal : 20-30 ml. daily



Packing : 1 Ltr, 2 Ltr & 5 Ltr.



## COMPOSITION:

Calcium	255 gm.
Phosphorus	127.5 gm.
Magnesium	6 gm.
Manganese	1.5 gm.
Iron	1.5 gm.
Iodine	325 mg.
Copper	4.2 gm.
Zinc	9.6 gm.
Cobalt	150 mg.
Sulphur	7.2 gm.
Potassium	100 mg.
Sodium	6 gm.
Selenium	10 mg.
Vit A	70000 IU
Vit D3	70000 IU
Vit E	250 mg.
Nicotinamide	1000 mg.
Chromium	78 mg.
DI-Methionine	3 mg.
L.Lysine	9 mg.
Excipients	q.s.

## BENEFITS:

- Helps in Maximum Bio Availability
- Improves Fertility
- Healthy Calf
- Maintains Health
- Improves Milk Production

## लाभ:

- शरीर में मिनरल की अधिकतम उपलब्धता
- पशुओं की प्रजनन क्षमता को बढ़ता है
- तंदुरुस्त बछड़े के लिए
- पशुओं की सेहत को अच्छा रखता है
- दूध का उत्पादन बढ़ता है



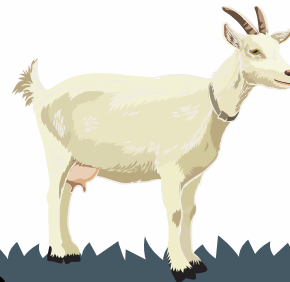
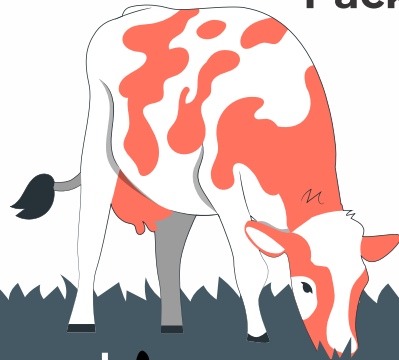
Chelated

**MINFEED**

Diamond



Packing: 5 & 10 Kg.



FERTILITY BOOSTER

GROWTH BOOSTER

FAT BOOSTER

MILK BOOSTER

EGG BOOSTER

**Chelated Mineral Mixture For  
Cattle, Poultry, Swine, Sheep & Goat**

## FEEDING SCHEDULE:

**Cow & Buffalo:** 50 gm. per day for maintenance and better milk production

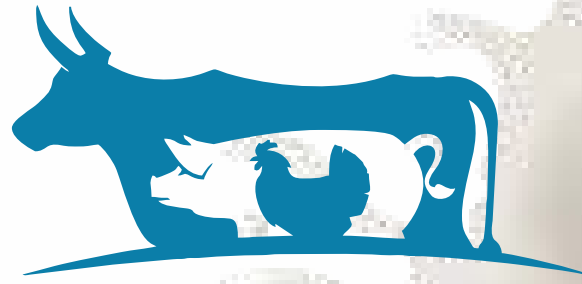
**Pig/Calf/Sheep:** 25-30 gm. per day for better weight gain and health 1kg-2kg. to be mixed in 100kg. feed

**Poultry:** 2 kg per quintal of feed  
or as directed by veterinarian

Cattle Feed Supplement



www.refitanimalcare.com



# MILK, FAT & SNF BOOSTER

## Nutritional Value Per Kg.

Vitamin A 2500000 IU, Vitamin D3-500000 IU, Vitamin B2 1.5 gm, Vitamin B12-3000 mcg, Vitamin E 1500 IU, Vitamin K1.5 gm, Niacinamide 5 gm, calcium pantothenate 5 gm. Choline Chloride 1000 mg, Calcium 300 gm., Phosphorus 140 gm, Iodine 325 mg, Iron 4 gm, Manganese 4500 mg, Sulphur 4.5 gm, cobalt 250 mg, Magnesium 8 gm, Copper 8 gm, Zinc 7 gm, Sodium Chloride 100 mg, L-lysine 5 gm, DL-Methionine 4 gm, Live Yeast Culture 12500 mil. CFU, Lactobacillus Sporogenes 30000 Mil. CFU, Alpha-amylase 1500 mg, Chromium 110 mg, Excipients q.s.

## BENEFITS

### Cattle

- Increase Milk, SNF & Fat%
- Improves fertility Rate
- Prevents ketosis
- Calf growth Promoter

### Swine :

- Improves growth rate
- Maintains good health
- Improves piglet growth rate

### Poultry :

- Improves Egg Shell quality
- Improves Egg production
- Chick Growth Promoter
- Improves Hatchability Rate



# Chelated Mashup

POWDER & GRANULES

**Packing:**  
1 Kg, 5 Kg, 10 Kg & 20 Kg.

## FEEDING SCHEDULE

**Cattle, Buffaloes :** 30-50 gm. daily mixed in feed  
**Sheep/Goat/Swine :** 20-30 gm. daily mixed in feed  
**Calf :** 15-20 gm. daily mixed in feed  
**Poultry :**  
**Chicks/Grower/Broiler :** 1 kg./ton of feed  
**Layer/Breeders :** 2.5 kg./ton of feed  
 or as directed by the veterinarian

# Feed Supplement for Cattle, Swine & Poultry

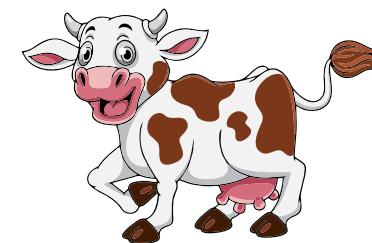


www.refitanimalcare.com



# MASTIOFF

## Powder



**AN IDEAL FORMULATION  
WITH ADVANCED POWER  
OF TRISODIUM  
CITRATE**



### INDICATIONS :

- MASTITIS • TEAT TUMOUR
- TEAT CHORD • TEAT SPIDER
- PUS FORMATION • HARD MILKERS
- LESS MILK IN UDDER
- INFLAMMATION OF TEAT

### USAGE :

Twice a day or as directed by the veterinarian

थनैला रोग के उपचार  
हेतू **मैस्टीऑफ** प्रयोग करें

#### Each 60 gm. contains :

Serratiopeptidase	120 mg.	Vitamin C	750 mg.
Potassium Iodide	7 gm.	Vitamin H	25 mcg.
<b>Trisodium Citrate</b>	<b>35 gm.</b>	Aloevera	100 mg.
Vitamin A	4000 I.U.	Zinc Sulphate	150 mg.
Amino Nitrogen	100 mg.	Ocimum Sanctum	1000 mg.
Vitamin E	1500 I.U.	Azadiarchta Indica	4000 mg.
Lacto Bacillus	200 million CFU	Bromelain	320 mg.
Live Yeast culture	7500 million CFU	Sodium selenite	10 mg.
Vitamin K	400 I.U.	Base	q.s.

Packing: 60 gm.

**ANTI MASTITIS FEED SUPPLEMENT**



www.refitanimalcare.com



# Milkyboon

Powder



दूध उतारने में सहायक

CATTLE FEED SUPPLEMENT

Combination of Calcium, Phosphorus, Vitamin D3,  
Enzyme, Jivanti & Shatavari

## BENEFITS :

- Easy Let down of Milk
- Increase Milk & Fat Percentage
- Remove Stress & Increase Immunity
- Better Udder development & Prevent Mastitis
- Overcome Calcium & Phosphorus Deficiency
- Improve bones strength & muscle tone
- Useful in calf growth

## FEEDING SCHEDULE :

Cattle/Buffalo : 20 gm. twice daily  
or as directed by the veterinarian

ऑक्सीटोसिन से छूटकारा  
पशुओं में दूध उतारने का एकमात्र सहारा  
**मिल्कीबून पाऊडर**

EACH 100 GM. CONTAINS :	
Calcium Chelated	25 gm
Phosphorus Chelated	12.5 gm
Vitamin D3 Chelated	100000 IU
Magnesium Chelated	2000 mg
Enzyme Complex	10 gm
Iron Chelated	200 mg
Acorus calamus	8000 mg
Laptadenia reticulata	12000 mg
Asparagus racemosus	10000 mg
Ashwagandha	5000 mg
Brahami	5000 mg
Base	q.s.



## Easy Let Down of Milk

Packing : 500 gm., 1 Kg., 5 Kg., 10 Kg. & 20 Kg.



www.refitanimalcare.com



# Milk M L D Down Powder

Combination of Calcium, Phosphorus, Vitamin D3 & Enzymes

## BENEFITS :

- Easy Let down of Milk
- Increase Milk & Fat Percentage
- Remove Stress & Increase Immunity
- Better Udder development & Prevent Mastitis
- Overcome Calcium & Phosphorus Deficiency
- Improve bones strength & muscle tone
- Useful in calf growth
- Useful in anestrus & prolapse
- Improves egg production in poultry
- Helpful in leg lameness in poultry

पशुओं में दूध उतारने  
के लिए पाऊडर

मुर्गियों में अण्डों की  
गुणवता बढ़ाता है।



## NUTRITIONAL VALUE PER 100 GM.

Calcium Chelated	25 gm.
Phosphorus Chelated	12.5 gm.
Vitamin D3	12000 IU
Magnesium Chelated	2000 mg.
Enzyme Complex	10 gm.
Iron Chelated	200 mg.
Zinc Chelated	1000 mg.
Iodine Chelated	20 mg.
Cobalt Chelated	20 mg.
Copper Chelated	120 mg.
Chromium Chelated	800 mcg.
Filler	q.s.

## FEEDING SCHEDULE :

Cattle & Buffaloes 30-50 gm. daily mixed in feed.

Calf : 10-15 gm. daily mixed in feed.

Poultry : 1 Kg./ton mixed in feed

## PACKING :

1, 5, 10 & 20 Kg.



www.refitanimalcare.com

# Omega 20

POWDER



Blend of **OMEGA 3,6,9**  
Fatty Acids

## NUTRITIONAL FACTS EACH 1000 GM. CONTAINS

Carbohydrates	300 gm.	Vitamin B12	90 mg.
Protein	100 gm.	Vitamin B5	50 mg.
Fibre	75 gm.	Calcium	120 gm.
Fat	40 gm.	Phosphorus	90 gm.
Omega 9	20 mg.	Choline	75 gm.
Omega 6	4.5 mg.	Sodium	3 gm.
Omega 3	0.75 mg.	Chloride	2.5 gm.
Vitamin A	500000 IU	Potassium	1.5 gm.
Vitamin D	50000 IU	Magnesium	1.5 gm.
Vitamin B9	450 mg.	Manganese	1 gm.
Vitamin B3	360 mg.	Iron	600 mg.
Vitamin C	250 mg.	Copper	325 mg.
Vitamin B1	180 mg.	Zinc	120 mg.
Vitamin B2	180 mg.	Iodin	60 mg.
Vitamin E	125 mg.	Cobalt	20 mg.
Vitamin B6	90 mg.	Selenium	20 mg.

## MANAGE ANOESTRUS & REPEAT BREEDING IN CATTLE

बांझपन की समस्या का समाधान

### BENEFITS :

#### CATTLE :

- Helpful in anoestrus & repeat breeding
- Increase Milk yield by 10-15%
- Increase Fat & Protein of Milk
- Reduces Stress & Prevent metabolic disorders

#### HORSE :

- Growth & Development of skeletal system
- Instant Energy source

#### SHEEP/GOAT/SWINE

- Immunity Booster & Weight gainer



PACKING: 500 gm.

### FEEDING SCHEDULE :

Cattle/ Horse : 25 gm. daily  
Sheep/ Goat/Swine : 10-15 gm. daily  
or as directed by the veterinarian

Enriched with Prebiotics, Probiotics, Enzymes as cellulase, Amylase, Protease, Xylanase Pectinase, B. Glucanase, Lipase, Phytase & Mannase

# SWINE WEIGHT GAINER



# PROLAPRID

## INDICATIONS

- Vaginal Prolapse
- Uterine prolapse

## BENEFITS

- Helps in shrinkage of the prolapsed organ which helps to put the organ back to its anatomical position
- Increases the uterine muscle tone and strengthens uterus, thus reduces the chances of recurrence
- Safe for pregnant animals
- Effective in both pre-partum and post- partum prolapse

## FEEDING SCHEDULE :

15 gm. twice daily or as directed by the veterinarian.



**A Herbal Supplement  
to Stop Prolapse**

**Powder**

**For Use in Uterine/Vaginal Prolapse**

**EACH 100GM. CONTAINS :**

Nag Bhasma	1.5 gm.
Yashad Bhasma	1.5 gm.
Bang Bhasma	1.5 gm.
Symplocos Recemosa	20 gm.
Rasina Flava	10 gm.
Soda Biboras	20 gm.
Tinosbora Cordifolia	5.5 gm.
Saracea Asoca Bark	15 gm.
Acacia Bark	15 gm.



गाय, भैंस के पिछा दिखाने  
के उपचार हेतू

**Packing :  
500 gm.**





# R-Bolite<sup>+</sup>

**BETTER UDDER DEVELOPMENT  
SMOOTH PARTURITION**

## Nutritional Supplement for Pregnant Animals

### Benefits :

Regular Feeding of R-BOLITE+ to cattle

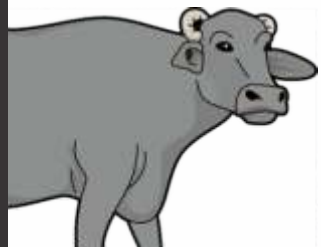
- Helps to Mobilise Calcium and Phosphorus
- Helps to avoid chances of hypocalcemia
- Helps in smooth calving.
- Vitamin-H help to Development of Udder.
- For Reducing Chances of ROP

### लाभ :

- गर्भावस्था में सहायक होता है।
- लेवे (थनों) को बढ़ाने में सहायक
- कैल्शियम और फास्फोरस का संतुलन बनाये रखता है।
- दूध ग्रन्थियों को ताकत देता है।



**Net Content :**  
**20 Pouches of 50 gm. Each**



### USAGE :

Cattle & Buffalo :  
One Pouch (50 gm.) daily





# R-Booster Liquid



## INDICATIONS :

- Pre-partum • Peak lactation
- Post-partum • Ketosis

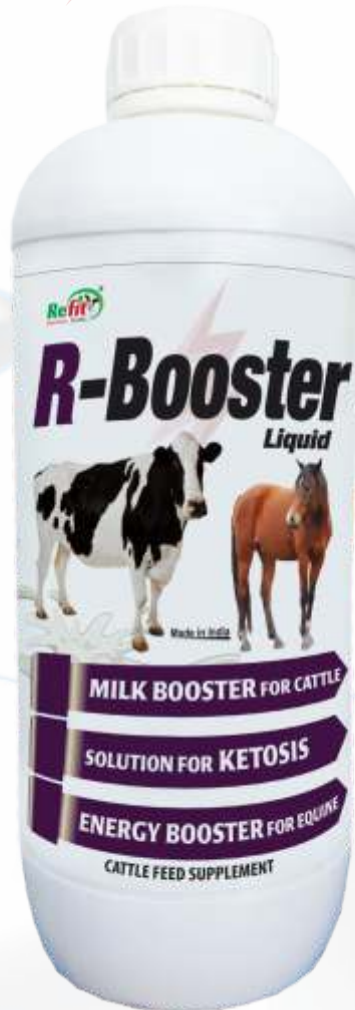
**MILK BOOSTER FOR CATTLE**

**SOLUTION FOR KETOSIS**

**ENERGY BOOSTER FOR EQUINE**

## COMPOSITION : EACH 1 LTR. CONTAINS :-

Gluconeogenic precursors fortified with Vitamin E 2500 mg, Vitamin. D3 2500 I.U., Pantothenic acid 190mg. Niacinamide 10 mg, Vitamin B6 170 mg, Vitamin B2 165 mg, Vitamin B12 600 mcg Hydrated trisodium citrate 75 mg, Lactic acid 20 mg, Lactose 1.50 gm



**Packing: 1 Ltr.**

## BENEFITS :

R-BOOSTER improves blood glucose level  
R-BOOSTER prevents parturation related disorders  
R-BOOSTER prevents ketosis  
R-BOOSTER augments milk production

## लाभ :

पशुओं में रोगों से लड़ने में सक्षम है।  
दूध बढ़ाने में सहायक है।  
पशुओं में प्रसव के दौरान होने वाले रोगों से बचाता है।  
पशुओं को तनाव मुक्त करता है।

## FEEDING SCHEDULE :

100-200 ml daily for livestock. or as directed by the Veterinarian



# CATTLE FEED SUPPLEMENT



[www.refitanimalcare.com](http://www.refitanimalcare.com)

Anti Stress & Electrolyte Liq.

फीड हो आर-कूल युक्त-पशु और मुर्गियां रहें तनाव मुक्त



# R-COOL Strong



Liquid

## BENEFITS (Poultry)

- Improves Shell Thickness
- Overcomes Stress Period
- Reduces Shell Fracture
- Prevent Leg Weakness
- Optimize Calcium & Phosphorus
- Useful in Coccidiosis

## BENEFITS (Cattle)

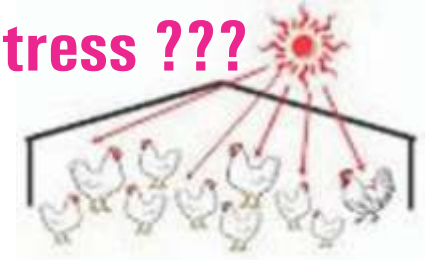
- Overcomes Stress Period
- Prevent Dehydration Stroke
- Maintains Electrolyte Balance
- Regulates BMR
- Useful in -ve energy balance
- Useful in Ketosis
- Useful in Diarrhoea & Hypocalcemia

## DIRECTION FOR USE

Cow/Buffalo/Horse in Enteritis : 200 ml daily  
Calves : 100 ml daily for 5 days  
Horses after Exercise : 200 ml daily  
Poultry : (Per 1000 birds)  
Chicks : 200 ml., Growers : 300 ml.  
Layers : 500 ml.



Summer Stress ???



Composition (Each 100 ml. contains)

Calcium Lactate	120 mg.
Potassium Chloride	1860 mg.
Sulphate	300 mg.
Sodium Chloride	292 mg.
Sodium acid phosphate	624 mg.
Sodium Citrate	4215 mg.
Dextrose monohydrate	40000 mg.

PRESENTATION :

500 ml., 1 Ltr. & 5 Ltr.



www.refitanimalcare.com

Electrolyte Liquid for CATTLE, POULTRY & EQUINES



# Recal-AD3

Powder



**HIGHLY CONCENTRATED READY  
TO USE CALCIUM POWDER FOR CATTLE**

## **BENEFITS :**

- Improving Milk yield in Cattle/Bufferaloes.
- Formation of Strong Bones in Growing Animals
- Improving Health in Weak and Debilitated Animals.
- Brings the Animal quickly to peak Production after parturition.
- Highly useful in Milk Fever.
- Instant Source of Calcium & Energy.

## **FEEDING SCHEDULE :**

**CATTLE :** 20-30 gm daily added in feed or as recommended by veterinarian.



## **EACH 20 GM CONTAINS :**

Calcium	5.5 gm
Phosphorus	2.5 gm
Vit D3	16000 iu
Vit B12	200 mcg
Vitamin A	2500 iu
Vitamin E	25 mg
Vitamin H	100 mcg
Liver extract	10 gm
Selenium	50 mcg
Cobalt chloride	20 mg
Nicotinic acid	350 mg
Amino acids	750 mg
Disodium hydrogen peroxide	175 mg
Copper sulphate	50 mg
Ferrous sulphate	50 mg
Lactobacillus	20 million cfu
Chittrak	150 mg
Masparni	150 mg
L.reticulate	350 mg
A.recimosus	1500 mg



## **Packing :**

1, 5, 10 & 20 Kg.



[www.refitanimalcare.com](http://www.refitanimalcare.com)

**पशुओं के लिए कैल्शियम पाऊडर**

# Recal-Gel

INSTANT ENERGY SOURCE  
WITH IONIC CALCIUM

## BENEFITS :

- Ensures rapid & efficient absorption of calcium and enhances serum calcium level within 15 min. of oral administration.
- Maintains serum calcium level longer than I/V calcium therapy.
- Provides 5 times more calcium than I/V calcium injection.
- Prevents Milk fever & Associated complication.
- Increases milk Yield, Favours the Normal Contraction of Uterus, Normal Calving and Timely Expulsion of Placenta.

## To Prevent Milk Fever :

Give one bottle at the first sign of calving & give another bottle 6 to 12 hours post calving, repeat every 12 hours as needed or as directed by the veterinarian. A post calving dose of Recal-Gel is very

## लाभ :

प्रसव के दौरान सहायक है।  
कैल्शियम की पूर्ति करता है।  
मिल्क फिवर में सहायक है।  
प्रोलेप्स में सहायक है।



Each 100 gm. contains :

<b>CALCIUM(Ca++)</b> :	<b>6600 mg</b>
(Supplies calcium ions to ensure normal levels of serum calcium before,during and after calving)	
<b>Phosphorus</b>	<b>3400 mg</b>
<b>Vitamin D3</b>	<b>38000 I.U.</b>
<b>Vitamin B12</b>	<b>400 mcg</b>
<b>Cobalt</b>	<b>125 mg</b>
<b>Manganese</b>	<b>30 mg</b>
<b>Zinc</b>	<b>250 mg</b>
<b>Propylene glycol</b>	<b>1000 mg</b>
<b>Carbohydrate</b>	<b>10000 mg</b>

Direction for Use :

For higher Milk Yield, administer one bottle per animal per day for 3-5 days or as directed by the veterinarian.

Appropriate overages of vitamins are added.

Administration :

- Remove the seal of the bottle hold the head of the animal in a normal to slightly elevated position.
- Carefully place the nozzle into the back of mouth.
- Administer the entire content of the bottle by slowly squeezing.

**Packing : 300 gm.**  
**Squeezable tube**



**EACH 300 GM. CONTAINS :**

Ionic CALCIUM(Ca++)	43500 mg
Phosphorus	21750 mg
Vitamin A	375000 I.U.
Vitamin D3	38000 I.U.
Vitamin B12	100 mcg
Vitamin B1	5 mg
Vitamin B2	5 mg
Vitamin B3	100 mg
Biotin (Vit. H)	20 mcg
L-Arginine	500 mg.
Flavoured Syrup Base	q.s

# Recal-PEP Gel

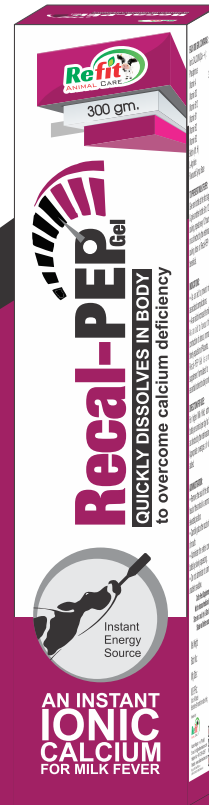
**QUICKLY DISSOLVES IN BODY**  
to overcome calcium deficiency

AN INSTANT  
**IONIC**  
**CALCIUM**  
FOR MILK FEVER

43.5  
gel

**TO PREVENT MILK FEVER :**

Give one bottle at the first sign of calving & give another bottle 6 to 12 hours post calving, repeat every 12 hours as needed or as directed by the veterinarian. A post calving dose of Recal-PEP Gel is very beneficial.



**INDICATIONS :**

- As an aid to prevent milk fever & associated complications.
  - As an aid to increase the milk yield.
- As an aid to favour the normal contraction of uterus, normal calving & timely expulsion of Placenta.
- Recal-PEP Gel is a nutritional supplement formulated to supply the essential nutrient to dairy animals

**Packing : 300 gm.**

## Instant Ionic Calcium Gel



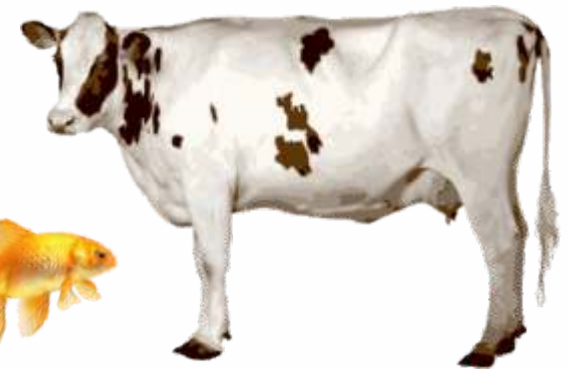
[www.refitanimalcare.com](http://www.refitanimalcare.com)



# Re-Ferrol<sup>Plus</sup>



**IRON, COPPER, COBALT  
FOLIC ACID, CALCIUM  
VITAMIN B2  
B6, B7 & B12**



## COMPOSITION : EACH 20 ML. CONTAINS

Calcium Gluconate	80 mg
Ferric Ammonium Citrate	800 mg
Equivalent to Net Iron	160 mg
Ferric Sulphate	335 mg
Equivalent to Net Iron	100 mg
*Total Net Iron	260 mg
Copper Sulphate	120 mg
Cobalt Chloride	1.5 mg
Zinc Sulphate	50 mg
Cholecalcefrol (Vit D3)	4000 IU
Niacinamide	75 mg
Biotin	275 Mcg
Folic Acid	1.5 mg
Cyanocobalmin	20 Mcg
Magnesium Sulphate	200 Mcg
Enzyme Complex	200 mg

## FEEDING SCHEDULE :

Cattle : 20-30 ml. daily  
Sheep/Goat/Calves : 10-20 ml. daily  
Swine : 20-30 ml. daily  
Chicks : 30 ml./100 birds  
Grower/Layer : 50-100 ml./100 birds  
Fishes : 5 ml./Ltr of water  
or as directed by the veterinarian

## INDICATIONS:

- Panting • Growth Promoter • Iron tonic for Anaemic, Pregnant and Lactating animals
- Supportive for anaemic condition due to parasitic infestation, Theileriosis, Hemoprotozoan diseases and tick infestation



Packing :  
500 ml., 1 Ltr. & 5 Ltr.



# IRON TONIC FOR CATTLE, POULTRY & SWINE

UPGRADED FORMULA



# REFERTILE

## HEAT INDUCER BOLUS



मादा पशुओं को गर्मी में लाने के लिए  
**Surely bring your Animal in HEAT**

### INDICATIONS :

- Infertility
- Anoestrus
- Silent Heat
- Delayed Ovulation
- In Repeat Breeding
- Improved Synthesis of reproductive hormones

### Usages : (BOLUS)

To Improve heat :

1 bolus for 10 days during the cycle

To Improve Conception rate :

1 bolus for 10 days before and after A.I.



### लाभ :

पशु को हीट में लाने में लाभकारी है।  
पशु में अण्डा बनने की प्रक्रिया को शुरू करता है।  
मिनरल व विटामिन की कमी को पूरा करता है।  
पशु में हॉर्मोन के संतुलन को बनाये रखता है।

### COMPOSITION :

Beta Carotene  
Vitamin E & K  
Chelated Zinc  
Chelated Copper  
Chelated Manganese  
Iodine  
Cobalt Selenium  
Bioactive Chromium  
Omega Fatty Acids

### PRESENTATION :

Bolus : Pack of 10 Bolus

With Power of Beta Carotene, Bioactive Chromium, Alongwith Chelated Minerals



www.refitanimalcare.com





# REFIGEST

Digestive Tonic for Livestock & Poultry



## INDICATIONS:

- Fatty liver conditions.
- Prevent liver dysfunction
- Digestive disturbances in animal when fed on diet (high in oil, fat cholesterol and cholic acid) leading to an increased supply of free fatty acids to hepatic cells
- Decreased egg production & hatchability in poultry

## FEEDING SCHEDULE : For Oral administration

### Cattle and Horses :

10-15ml per 40kg body weight for 5-7days

### Sheep, goats and calves:

10-15ml per 20kg body weight for 5-7days

### Poultry and swine:

20-25 ml. per liter in drinking water for 5-7days



## COMPOSITIONS:

Sorbitol, Betaine, D-Panthenol  
Choline chloride, Magnesium sulphate  
Carnitine hydrochloride,  
Digestive Enzymes Solvents ad qs.

Packing : 1 Ltr., 2 Ltr. & 5 Ltr.





# रिमिल्की है खास, दूध की करे बरसात

## Chelated Remilky FORTE



**Powerful Calcium for  
Cattle & Poultry**

### DIRECTION FOR USE :

Cow, Buffalo, Horse, Camel 100 ml. Daily  
Calf, Foal, Pig Sheep & Goat 15-30 ml. Daily  
Layer & Breeders 30 ml./100 Birds  
Growers/Broilers 20 ml./100 Birds

### BENEFITS :

- To increase milk production & fat percentage in the milk.
- For growing Lactating & Pregnant animals.
- Prevents leg weakness and bone abnormality.
- Maintains intestinal pH for maximum absorption of Ca & P.
- Reduces egg shell breakage during early peak and advance laying period.

Composition : Each 100 ml. Contains :

Vitamin A	45000 I.U.
Vitamin D3	8000 I.U.
Vitamin B12	100 mcg.
Vitamin H	20 mg.
Calcium	1628 mg.
Phosphorus	838.5 mg.
Carbohydrate	30000 mg.
Manganese Chelated	60 mg.
Zinc Chelated	10 mg.
Cobalt Chelated	50 mg.
Copper Chelated	50 mg.
Energy Value	111.5 K.cal.
Milk enhancing herbal extract	q.s.
Bifidogenic Factors	q.s.



**Packing :  
1, 2, 5, 10 & 20 Ltr.**

## Chelated Calcium for Dairy Animals & Poultry



www.refitanimalcare.com

• रिशैल-एच-गोल्ड • RESHELL-H-GOLD

COMPOSITION : EACH ML. CONTAINS :

<b>Vitamin H (Biotin)</b>	<b>100 mcg</b>
Vitamin A	20000 IU
Vitamin D3	10000 IU
Vitamin E	50 mg
Vitamin C	5 mg
Zinc	20 mg
Cobalt	200 mcg
Energy Value	0.65 Kcal
Vitamin B12	20 mcg

#### FEEDING SCHEDULE :

**Large Animals** : 10 ml. daily on chapati

**Small Animals** : 5 ml. daily on chapati

**Chicks** : 5 ml./100 birds

**Layers** : 10 ml./100 birds

or as directed by the veterinarian.



• रिशैल-एच-गोल्ड • RESHELL-H-GOLD

UPGRADED FORMULA  
**Reshell-H**<sup>®</sup>  
**GOLD**

UDDER GROWTH SUPPLEMENT WITH  
ADVANCED POWER OF VITAMIN H

**रिशैल-एच**  
गोल्ड

#### UNIQUE BENEFITS :

- Improves udder growth
- Improves milk holding capacity of teats
- Improves calf growth
- Brings shine on skin coat in male goat( buck) and male sheep (ram)
- Improves growth and egg production in poultry



#### Packing :

250 ml., 500 ml. 1 Ltr.  
2.5 Ltr & 5 Ltr.



www.refitanimalcare.com

**Veterinary Vitamin-H for Cattle & Poultry**

धनों का विकास करे ज्यादा- लेवे की सुरक्षा का करे वायदा



# RESHELL-H

Multi Vitamins Liquid Feed Supplement  
For Livestock & Poultry Feeding

## INDICATIONS

- Udder Growth
- Control on hair loss.
- Stimulation Growth
- Enhances breeding efficiency in the bulls.
- Reduce the chances of mastitis recurrence.

## For Udder Growth



Each ml. contains :

Vitamin H (Biotin)	50 mcg.
Vitamin E	50 mg.
Vitamin A	20000 I.U.
Vitamin D3	10000 I.U.

## DIRECTION FOR USE

Cattle 10 ml. daily & Calves 5 ml. daily

Chicks 5 ml. / 100 birds

Growers 7 ml. / 100 birds 1 daily

Layers 10 ml. / 100 birds



## PRESENTATION :

100 ml, 250 ml, 500 ml  
1 Ltr., 2.5 Ltr. & 5 Ltr.

Vitamin H Liquid For Cattle & Poultry



# RespiFit

## Respiratory Tonic For Livestock & Poultry



Unique formula to offer support to Animals/Poultry in Cough, Cold & Respiratory ailments.

### ADVANTAGE :

- Support ease in respiration
- Keep respiratory system free from mucus
- Acts as Anti Inflammatory & Decongestant
- Facilities easy breathing during changing weather
- Reduces risk of stress & pain
- To control respiratory symptoms during outbreak of CRD, Infectious coryza & other respiratory diseases

### FEEDING SCHEDULE :

Cow, Buffalo & Horse : 25 ml. twice daily  
Calf/Foal, Sheep, Goat & Pig : 15 ml. daily  
Poultry (For 100 Birds)  
Chicks : 5 ml.  
Growers & Broilers : 10 ml.  
Layers & Breeders : 15 ml.



Anti-Cough  
Tonic

Anti-Stress  
Formula

Cures  
CRD

### PACKING :

1 Ltr, 5 Ltr, 10 Ltr & 20 Ltr.

### COMPOSITION :

Adhatoda vasica, Ephedra gerardiana, Hedychium spicatum, Solanum xanthocarpum, Cassia occidentalis, Saussurea lappa, Alpinia kulanjana, Terminalia, bellirica, cicyrhiza glabra, Eucalyptus globulus, Achorus calamus, Abies webbiana, Calptropis procera, Pistacia integerrima, Zingiber officinalis, Piper nigrum, piper longum, Ocimum sanctum ext., Eucalyptus globulus, Thymus vulgaris, Mentha piperita, Menthol, Cinnamomum camphora, Emulsifying Base.



www.refitanimalcare.com

Ensure the conception with

# Resure

(After A.I.)

Better Formula with  
**Omega-3 &  
Omega-6 Fatty Acids**

## BENEFITS

- Improves uterine turgidity and helps in establishing pregnancy
- Improves uterine tone
- Improves uterine contraction
- Improves motility of sperms and ovum
- Tones up the uterine lining for implantation
- Improves uterine health
- Reduces chances of uterine infections

## RECOMMENDATION

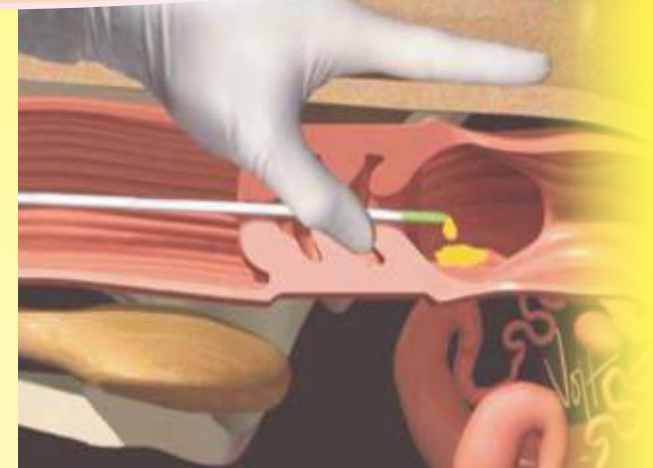
225 ml to be given orally  
after A.I. on the day of insemination

## लाभ :

ए.आई में सहायक है।  
बच्चेदानी की सुरक्षा में सहायता करता है।  
नर पशुओं के शुक्राणुओं की मात्रा बढ़ाता है।  
गर्भधारण में सहायक है।



**PRESENTATION**  
225 ml bottle



## Composition:

Each 225 ml. of Resure

## Nutrition Value:

* Vitamin-A	5,00,000 i.u.
* Vitamin-E	500 mg.
* Coper	2000 mg.
* Cobalt	50 mg.
* Zinc	1000 mg.
* Iodine	200 mg.
* Manganese	2000 mg.
* Omega-3 Fatty Acids	q.s.
* Omega-6 Fatty Acids	q.s.

**Omega Fatty Acids for Better Conception Rate**





# Revita-B12



## Multivitamin Liquid Enriched with Vitamin-B12 & C

### ADVANTAGE :

- Improves Immune Response.
- Enhance Higher Egg production in layer.
- Remove Stress associated with Transportation, Vaccination, Debeaking, Deworming, Infectious Diseases
- Improves Hatchability
- Aid in the stimulation of appetite which encourages growth.

### FEEDING SCHEDULE :

Poultry : 2-3 ml/100 birds daily  
 Growers : 5 ml/100 birds daily  
 Layers : 5-7 ml/100 birds daily  
 Cattle : 10 ml. daily  
 Sheep/Goat : 5 ml. daily



### COMPOSITION

#### Each per ml. contains :

Vitamin A	60000 IU
Vitamin D3	15000 IU
Vitamin E	50 mg
Vitamin B12	50 mcg
Vitamin C	50 mg
Biotin	10 mcg

**Packing:**  
500 ml, 1 Ltr, 5 Ltr.



www.refitanimalcare.com



# CATTLE FEED SUPPLEMENT



Chelated

# RIGMIN-FORTE™

Powder

**CHELATED MINERAL MIXTURE  
for Cattle, Poultry & Aquatic Animals**

## Composition : Each 1 Kg. Contains

Vitamin A	700000 IU	Selenium	20 mg
Vitamin D3	7000 IU	Sodium	5.9 mg
Vitamin E	250 IU	Suphur	0.75%
Nicotinamide	1 gm	Iron	1500 mg
Copper	5 gm	Zinc	9600 mg
Cobalt	150 mg	Iodine	325 mg
Magnesium	6 gm	Calcium	25.50%
Manganese	1.5 gm	Phosphorus	12.75%
Potassium	100 mg	Base	q.s.

## FEEDING SCHEDULE :

**Large Animal** : 30-50 gm. daily

**Small Animal** : 15-20 gm. daily

or mix 1 Kg per 100 kg. of feed

**Swine** : 20-30 gm. daily

**Poultry** : 1 Kg. per 100 kg. of feed

for 7-10 days every month

**Aqua** : 10 kg. per ton of feed

or as directed by the veterinarian



## BENEFITS :

### Cattle

- Improves Fertility
- Improves Milk & Fat Production
- Enhances Growth & Immunity
- Improves growth in young calves

### Poultry

- Improves Egg production, Growth Rate &

### Swine

- Improves Growth Rate & Weight Gain.

### Aqua

- Optimizes FCR & Maximizes Productivity
- Regulates Osmoregulation

अधिक प्रजन्न क्षमता

अधिक पाचन क्षमता

दूध में अधिक फेट की मात्रा

स्वस्थ पशु, तन्दरुस्त बछड़ा

अधिक रोग प्रतिरोधक क्षमता

पोष्टिक आहार की कमी में सहायक

ज्यादा बढ़त और अधिकतम उत्पादन

फीड में मिलाओ, पशुओं की अच्छी सेहत पाओं

## Packing:

1 Kg, 5 Kg, 10 Kg & 20 Kg.

**MORE MILK  
MORE EGG  
MORE PROFIT**



www.refitanimalcare.com



# CATTLE FEED SUPPLEMENT





**Complete solution  
for liver  
dysfunctioning**



# Rivliv

HERBAL LIVER TONIC

## with Advantage of **SILYMARIN**

- ⊕ Increases liver cell synthesis
- ⊕ Reduces blood lipids
- ⊕ Hepatoprotective
- ⊕ Anti-oxidant
- ⊕ Inhibits hepatic synthesis of cholesterol

## Recommended Usage :

**Cows, Buffaloes :** 50 ml twice daily  
**Calves :** 20- 25 ml twice daily  
**Sheep & Goat :** 10- 15 ml twice daily  
**Dogs :** 5 ml daily  
**Poultry :** 10 ml/100 Birds per day

## फायदे :

लीवर की सुरक्षा करता है।  
पशु को तनाव मुक्त करता है।  
खून बढ़ाने में सहायक है।  
पशु को गर्मी के तनाव से राहत दिलाता है।  
पाचन क्रिया को तन्दरुस्त रखता है।

## Indications

- Poor digestion and absorption of nutrients
- Poor production and performance
- Low feed conversion
- Poor weight gain
- Lower immunity
- Fatty liver
- Hepatitis

## COMPOSITION :

EACH 10 ML. CONTAINS :

Vitamin B <sub>1</sub>	50 mg
Vitamin B <sub>2</sub>	1.5 mg
Niacin	10 mg
Biotin	25 mcg
Sarphuntra	47.5 mg
Bhumiamlika	43.75 mg
Aruna	33.75 mg
Yavalika	31.25 mg
Nimfa	25 mg
Silymarin	100 mg

## Presentations :

500 ml, 1 Ltr, 2 Ltr, 5 Ltr  
10 Ltr & 20 Ltr.



**Protect Liver for Better Growth & Higher Production**



आर-किट खिलाये-मैसटाईटिस को भगाये



# R-Kit

## 3 Days Kit for management of Mastitis

### INDICATIONS

- Maintains pH of Udder & Milk
- Enhances immunity against Mastitis
- Has powerful anti inflammatory & analgesic property
- Helps in faster & completely recovery from mastitis
- Supportive to Antibiotic therapy
- Highly useful in Teat cord, Teat Tumor

pH Regulator

Fibrosis controller

Milk regulator

### COMPOSITION :

Trisodium Citrate, Vitamin A, Biotin, Vitamin D3, Vitamin K, Vitamin E, DL-Methionine, L-Lysine, Potassium Iodide, Serratiopeptidase, Aloe-vera, Ocimum Sanctum, Azadirachta indica, Bromelain, Lactic Acid Bacillus, Vitamin-C, Manganese Sulphate, Copper Sulphate, Zinc Sulphate, Selenium with Live Yeast Culture & Unique Herbs

**Mastitis**  **Solution**



1st day  
पहले दिन

+

Feeding Schedule :



2nd day  
दूसरे दिन

+

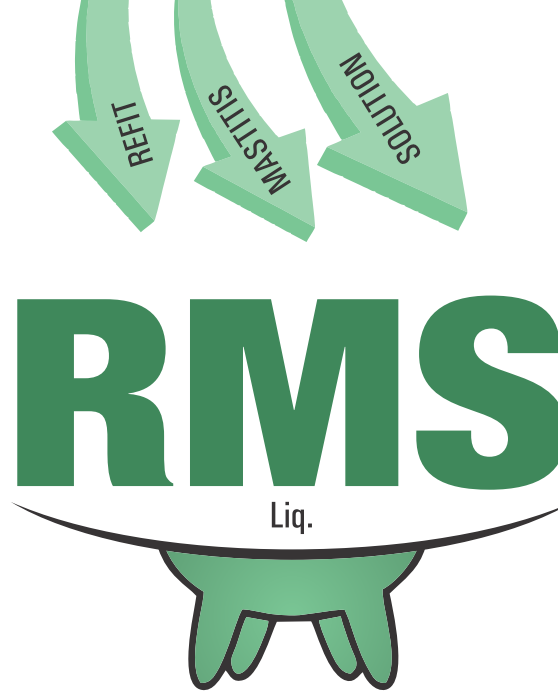


3rd day  
तीसरे दिन

**PRESENTATION :**  
**Combo pack Kit (3 Pouches)**



www.refitanimalcare.com



## INDICATIONS :-

- Maintains normal pH of milk.
- Prevents re-occurrence of mastitis
- Repairs the damaged tissues of udder.
- Improves milk production.
- Improves milk quality

## Each 50ml contains :

Glycyrrhiza globra	200 mg
Curcuma Longa	410 mg
Tinospora Cordifolia	400 mg
Tankan Bhasam	220 mg
Psoralea Corylifolia	200 mg
Argemone Mexicana	425 mg
Asperagus Recemosus	400 mg
Vermonia Anthelmintica	400 mg
Neem Ext.	2000 mg
Citric Acid	210 mg
Sod. Citrate	12 gm.
Vitamin A (Natural)	200000 I.U.
Emblica Officinallis (Natural vitamin-c)	425 mg
Vitamin D3 (Natural)	42000 I.U.

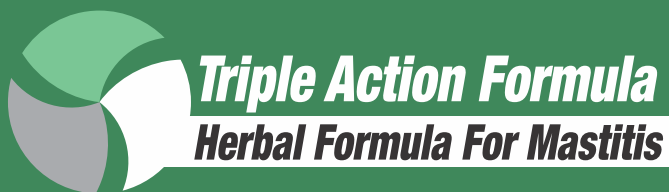
## Usage :-

50 ml. Twice a Day for 5 days or  
As directed by veterinarian



## PACKING :

500 ml.



# RumiPulse

**Bolus**

## COMPOSITION :

Sacchromyces Cervisae	25 million cfu
Lactobacilus Sporogenes	20 million clu
Aspergillus Sporogenes	20 million clu
Ferrous Sulphate	250 mg
Copper Sulphate	500 mg
Cobalt Sulphate	100 mg
Zinc Sulphate	200 mg
Nuxvomica	500 mg
Sodium Bicarbonate	500 mg
Dextrose	500 mg
DI-Methionine	1 gm
Nicotinamid	200 mg
Cobalt Chloride	100 mg
Niacin	500 mg
Amino Acids	1 gm
Liver Extract	5 mg

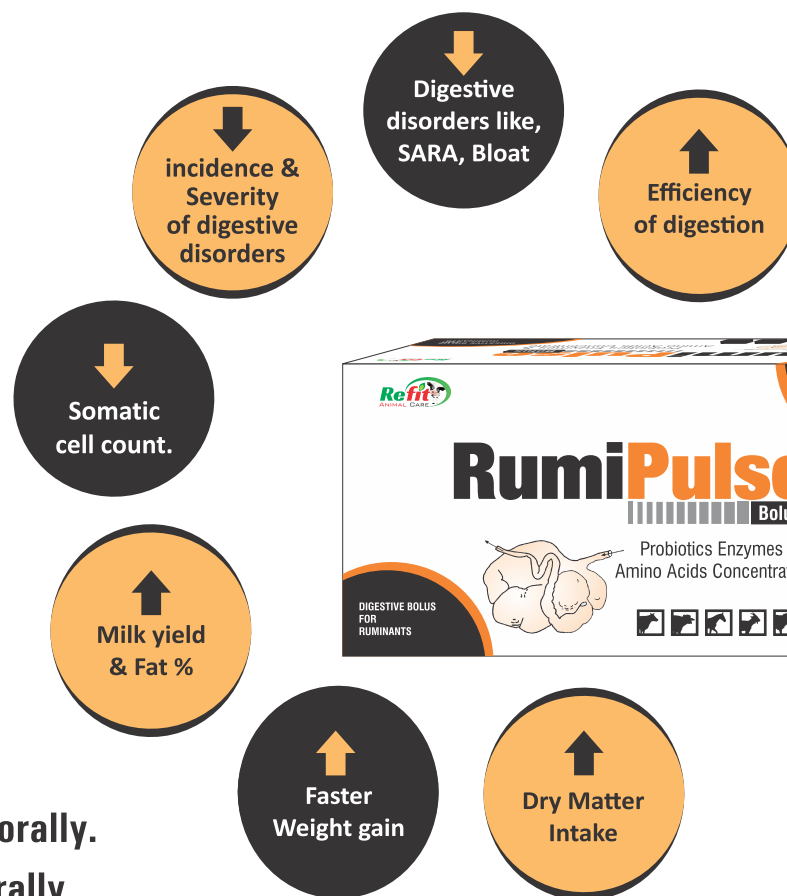
## लाभ :

- ◆ रुमन की गतिशीलता को बढ़ाता है।
- ◆ पशुओं में लार ग्रंथी को उत्तेजित करता है।
- ◆ रुमन में तेज़ाब की मात्रा को सही रखता है।
- ◆ इम्पेक्शन में लाभकारी है।

## Usages : (BOLUS)

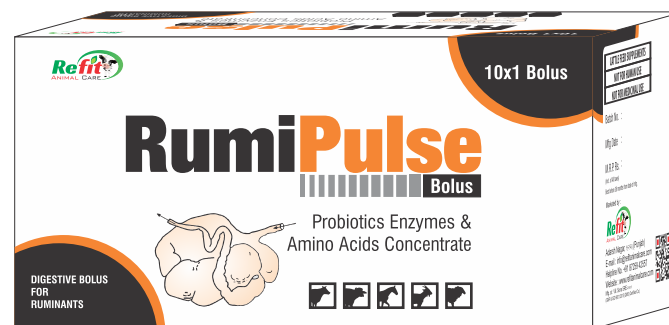
Large Animal : 1-2 Bolus twice daily orally.

Small Animal : ½ Bolus twice daily orally.



## INDICATIONS :

- Acidic, alkaline & simple indigestion.
- Anorexia ● Impaction ● Colic
- Bloat
- After effects of chemical drugs treatment



# DIGESTIVE BOLUS FOR CATTLE

## PRESENTATION :

Bolus : Blister Pack of 10x1 Bolus



www.refitanimalcare.com

# Rumen bacterial growth promoter for better digestion and growth



# RumoFat

Powder



## BENEFITS :

- Increase milk yield.
- Increase milk fat.
- Improves body growth & condition.
- Maintains Optimum Rumen Microflora and Fermentation.
- Check ketosis & Milk fever.
- Immediately restores milk production after illness

## HIGH ENERGY BYPASS FAT FOR DAIRY ANIMALS



Composition : Each 100 gm. contains :

Calcium propionate	2 gm.
Fermented live yeast culture	5 gm.
Rumen By pass fat	15 gm.
Rumen By pass Protein	1 gm.
Available Calcium	1.5 gm.
Jivanti	1500 mg.
Shatavari	1500 mg.
Chromium chelated with amino acid	40 mg.

## FEEDING RATE :

### Large Animals (Cow/Buffalo)

- 100 gm. twice daily for 1 week after calving
- 100 gm. daily for next four weeks
- 100 gm. daily for 15 days before calving
- Mix 1 Kg. per 100 kg. of Feed

**NUTRITIONAL SUPPLEMENT FOR RUMEN FERMENTATION AND OPTIMUM FAT CONTENT**

**Packing :  
1 Kg., 5 Kg., 10 Kg.  
& 20 Kg.**



[www.refitanimalcare.com](http://www.refitanimalcare.com)



**For Better Growth & Production**



# Rumo Trace

थनैला रोग, खुरपक्का  
बांझपन की समस्या  
को दूर करने के लिए

## BENEFITS :

- Enhances immunity
- Rapid recovery from Disease
- Increases Milk production
- Improves reproductive growth
- Acts as Anti stress
- Improves growth Rate

## DIRECTION FOR USE :

- Large Animal : 50 gm. daily
- Small Animal : 30 gm. daily  
or 1-2 kg./ton of feed  
or as directed by veterinarian

## Trace Minerals For Cattle

### COMPOSITION

(Each Kg. contains)

Cobalt	150 mg
Copper	15 gm
Iodine	325 mg
Iron	25 gm
Magnesium	25 gm
Manganese	25 gm
Potassium	100 mg
Sodium	6000 mcg
Sulphur	6000 mcg
Zinc	100 gm
Calcium	33%

### Packing :

1, 5, 10 & 20 Kg.

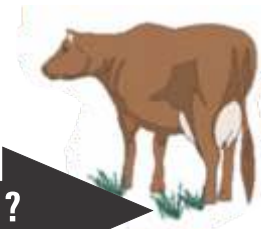


# पेट के कीड़े मारने में अत्यन्त सहायक



Veterinarian

Are you Upset from worm .....



Yes, I am suffering even after Repeated Use of Chemical Dewormer

Now Use Herbal Dewormer



# R-WORM

## Bolus

### BENEFITS

- Expel the worms in comparison to the chemical drug which contains just enough poison to kill the worms.
- completely safe to use throughout pregnancy and lactating animals.
- Does not destroy ruminal microflora.
- Expel the worms & Improve fertility.

**Suggested Usage :** 1 Bolus for Large Animals with curd/Jaggery (Gur) or as directed by Veterinarian.

Each Bolus contains

Mallotus Philepinesis	3000 mg.
Embelia ribis	1000 mg.
Butea Parviflora	750 mg.
Acacia Arabica	350 mg.
Sodium Bi-carbonate	500 mg.
Azadirachta Indica	350 mg.
Cassia Augustifolia	350 mg.
Mesu Aferia	50 mg.
Copper Sulphate	300 mg.
Ferrous Sulphate	200 mg.



**PRESENTATION :**

1 Bolus Blister Pack



[www.refitanimalcare.com](http://www.refitanimalcare.com)

# Herbal Dewormer Bolus



## COMPOSITION : Nutritional Fact per 100 gm.

Energy	418 Kcal	Copper	18 mg
Energy From Fat	233.3 Kcal	Manganese	16 mg
Total Fat	25.9 gm	Selenium	6.19 mcg
Saturated Fat	7.9 gm	Vitamin C	20 mg
Monounsaturated Fatty Acids	7.55 gm	Tiamine	3 mg
Poly Unsaturated Fatty Acids	9 gm	Riboflavin	3 mg
Carbohydrate	21 gm	Niacin	15 mg
Added Sugar	0 gm	Pantothenic Acid	2 mg
Protein	25.2 gm	Vitamin B6	1 mg
Dietary Fibers	3.7 gm	Folat	25 mcg
Calcium	2000 mg	Vitamin B12	0.80 mcg
Phosphorus	1000 mg	Vitamin A	4.40 IU
Iron	5 mg	Vitamin E	10 IU
Magnesium	840 mg	Vitamin D	40 IU
Potassium	725 mg	Choline	45 mg
Sodium	1100 mg	Cholesterol	0 mg
Zinc	20 mg		



# GOAT WEIGHT GAINER



## BENEFITS :

- Supports extra nutrition to Goat/Sheep.
- Improves muscle mass and weight gain in Goat/Sheep.
- Improves bone health in Goat/Sheep.
- Provides Energy Balance for proper growth.

## INGREDIENTS :

- Soybean seeds extract
- Carbohydrates derived from corn
- Dende oil
- Minerals & Vitamins Blend

## FEEDING SCHEDULE :

Approx 1.2 g. per Kg body weight is recommended.  
For rapid growth maximum 2 gm. per kg. body weight can be given.

## PRESENTATION :

1 Kg, 5 Kg, 10 Kg & 20 Kg.

बकरोँ का वजन बढ़ाने का जबरदस्त फार्मूला



www.refitanimalcare.com





# SE Care

Selenium Vitamin-E

POWDER



## Vitamin E Fortified with Selenium FOR CATTLE & POULTRY

### INDICATIONS & BENEFITS :

- To prevent night blindness, rickets, osteomalacia
- Immunity Building against viral disease & Coccidiosis in poultry
- Crazy chick disease & muscular dystrophy
- To reduce chances of ascites & sudden death in broiler
- To overcome stress in poultry
- Increase egg production in layers & breeders
- Improve fertility & hatchability
- Improves milk quality & prevent white muscle disease in cattle
- supportive therapy in milk fever and prolapse in cattle
- Reduce leg weakness in broiler
- Prevents stiffness in lambs and calves
- Improves weight gain & FCR in poultry

### FEEDING SCHEDULE :

**For Poultry :** (For 100 birds)

Broiler/Breeder/Layers : 10 gm.

through water or 100-150 gm. per ton of feed

**For Cattle :**

10 to 25 gm. per head should be given daily for 7-10 days,  
every months or as directed by veterinarian



### COMPOSITION :

Each 100 gm. contains

Vitamin E	10%
Selenium	100 ppm
Biotin	10 mcg.
Vitamin C	0.2 mg.
Inert Carrier	q.s.

**Packing :**  
200 gm.



[www.refitanimalcare.com](http://www.refitanimalcare.com)

# SPARK-H

Upgraded Multivitamin Supplement of  
Vitamin A, D3, E, H, K3 & Lysine  
For **CATTLE & POULTRY**



## BENEFITS :

- Improve growth in Poultry
- Stop hair loss & improve body shining in Calf.
- Restore & Regular Milk Yield after any Disease.
- Energy Booster in weak & emitiated animal.
- Improve fertility of breeding Animal.

## Feeding Schedule :

Cattle & Buffalo : 10-20 ml. daily

Horse : 10 ml. daily

Poultry : 3-7 ml./100 birds

## Packing :

250 ml, 500 ml, & 1 Ltr.



## COMPOSITION : EACH ML. CONTAINS

Vitamin A	8500 I.U.
Vitamin D3	5000 I.U.
Vitamin E	50 I.U.
Vitamin K3	1 mg.
Vitamin H	2.5 mg.
Zinc	10 mg.
Chromium	1 mg.
Lysine	500 mg.

**UPGRADED MULTIVITAMIN LIQ.**

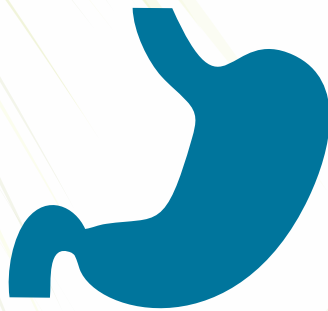


LET YOUR COW &  
CALF GUT HEALTHY



# Smart **CUD**

## DIGESTIVE POWDER FOR MAINTENANCE OF INTESTINAL HEALTH & DUNG CONSISTENCY



### FEEDING SCHEDULE :

**Cattle** : 30 gm. twice daily

**Calf** : 15 gm. twice daily

**Equine** : 30 gm. twice daily

**Sheep/Goat/Swine** : 10 gm. daily  
or as directed by the veterinarian.

**Packing:** 300 gm.



www.refitanimalcare.com



### HELPFUL IN :

- ACIDOSIS
- CALF SCOUR/ DIARRHOEA
- OFF FOOD
- RECOVERY FROM ILLNESS
- ABOMASAL CONDITIONS
- SUPPORTIVE WITH ANTIBIOTICS TREATMENT

### COMPOSITION : EACH 100 GM. CONTAINS

Fermented live yeast culture with	.
Digestive Enzymes	36.5 gm.
Bacillus Amyloliquefaciens	15.8 Billion CFU
Bacillus Subtilis	15.8 Billion CFU
Lactobacillus Acidophilus	3.5 gm.
Aspergillus oryzae	6 gm.
Propionibacterium Freudenreichii	15.8 Billion CFU
HSCAS Base	q.s.

**Cattle Feed Supplement**



Get rid of Mycotoxin with

# TieTox

Powder



For Immunity

Off Feed

Rumen Disturbance

**FEATURES & BENEFITS :**

- Effective against a wide range of mycotoxins including aflatoxin, Ochratoxin.
- Reduces economic losses & prevents risk of infection, Diseases, Impaired vaccination response, mastitis, Lameness, Diarrhoea Poor body condition.

**In pigs :**

Prevents effects of Mycotoxins as Liver damage skin problems, Nephrotoxicity, Infertility, Prolapse, Weak piglets and Embryonic death

**FEEDING SCHEDULE :**

Cow, Buffalo, Camel, Horse  
 30-40 gm. per animal daily  
 Calf, Heifer & Pig :  
 15-20 gm. per animal daily  
 or as directed by veterinary consultant.

*Activated Charcoal & Herbal Extracts  
Mycotoxin Binder Mould  
inhibitor and Mould Killer*



**COMPOSITION :**

- MOS
- Bacillus Subtilis
- Propionic Acid
- Benzoic Acid
- Acetic Acid
- Sorbic Acid
- Activated Charcoal
- Liver Extract
- HSCAS
- Silicon Dioxide

**Packing :**

1, 5, 10 & 20 Kg.

Cattle Feed Supplement



www.refitanimalcare.com

**TOXIN BINDER FOR Cattle & Swine**

## BENEFITS :

- Get Rid of Mycotoxin problems, digestive problems of Cattle, Sheep, Goat & Poultry
- Prevents from aglactia of cattle & salmonellosis, Colibacillosis, Liver problems & Ascites in poultry

## COMPOSITION :

Composed of Organic Metabolics  
Hydrolysing Enzymes  
Citric Acid, Phosphoric Acid  
Lactic Acid, Volatile Fatty Acids  
Minerals Base  
Enriched with yeast extract  
Proteinatios Material

# Toxoff



## FEEDING SCHEDULE :

Poultry (Preventive)

0.5 ml/Ltr. for 3-5 days

Curative : 1 ml./Ltr. for 5-7 days.

Livestock :

Large Animal :

50-100 ml/Animal twice a day for 3-5 days

Sheep/Goat/Calf :

10 ml./Animal Twice a day for 3-5 days



**PACKING :**  
1 Ltr., 2 Ltr.

# Mycotoxin Binder Mould inhibitor and Mould Killer





# TOFLIV

Forte

## EACH 10 ML CONTAINS :

Liver Extract	100 mg
Biolin	19 mg
Inositol	15 mg
Methionine Hydroxy Analogue	95 mg
Protien Hydrolysate	160 mg
Vitamin B1	245 mg
L-Lysine	95 mg
Choline Chloride Pore	650 mg
Tricholine Citrate	1750 mg
L-Martine	150 mg



## BENEFITS

- Enhances & controls the liver performance & prevents liver damage.
- Reduces feed wastage & helps in weight gain.
- Helps to improve appetite, digestion and assimilation processes, and promotes weight gain.
- Prevents fatty infiltration of the liver.
- Cure loss of appetite or indigestion.
- Cures skin and eyes that appear yellowish.

## FEEDING SCHEDULE :

- Cattle:** 50 ml daily  
**Sheep/Goat:** 20 ml daily  
**Fishes:** 50 ml per kg of feed  
 or as directed by veterinarian

**Liver Tonic for Cattle  
 Sheep, Goat &  
 Aquatic Animals**

**Packing : 1 Ltr.**





# VITOSOL-A



Water Miscible **Vitamin A** Tonic

Complete Growth Tonic  
& Energy Booster

## USES

- Controlling vitamin A deficiency in stress conditions
- Combating Blind calving problems
- Growth, maintenance and regeneration of skin and muscle cells
- Bone formation and fertility
- Stimulate Antibody and
- Increases immunity
- Improves FCR
- improves egg production
- Act as growth promoter for poultry
- Prevents cows abort, drop dead or weak calves.

## COMPOSITION (Each 5 ml.)

Vitamin A 500000 IU  
(Water miscible vitamin)



Packing: 1 Ltr.

## FEEDING SCHEDULE :

Chicks/Broiler 15 ml/100 birds

Grower 25 ml daily

Layer 40 ml daily

Cattle/Equine 100 ml daily

Calves 40 ml daily

Sheep/Goat 20 ml daily



[www.refitanimalcare.com](http://www.refitanimalcare.com)



With Advantage of Biotin

# Welly-Gel

High Potency Double Strength Calcium Gel



## EACH 100 GM. CONTAINS

Ionic Calcium	7200 mg.
Phosphorus	3600 mg.
Vitamin D3	4000 IU
Vitamin B12	400 mcg.
Biotin	200 mg.
L-Arginine	160 mg.
Cobalt	100 mg.
Manganese	10 mg.
Zinc	250 mg.
Glactagogue	5%
Ashwagandha	2000 mg.
Jiwanti	2000 mg.
Shatavri	2000 mg.
Energy Value	100 Kcal.

### Advantage :

- Prevention of Milk fever.
- Fulfilling the instant calcium requirements immediately after Parturition
- Improves milk production
- Improves liver function.
- Provides Balanced Energy Stamina

### DIRECTION FOR USE :

150 gm. 6-12 hours prior to calving  
 150 gm. within 6-12 hours after calving  
 or 50-100 gm. daily

### ADMINISTRATION :

• Remove the seal of the bottle hold the head of the animal in a normal to slightly elevated position. • Carefully place the nozzle into the back of mouth. • Administer the entire content of the bottle by slowly squeezing. • Do not administer to animal that are unable to swallow.



# Provides Balanced Energy Stamina



www.refitanimalcare.com





First time in india

# Zoom-H Powder



www.refitanimalcare.com



**ZEOLITE** BASED MULTIVITAMIN POWDER  
WITH VITAMIN H SUPPLEMENT

## CATTLE :-

Improves milk and fat production in cattle  
Improves Growth rate  
Reduces GIT problems by acting as buffer

## POULTRY :-

Increases feed efficiency  
Decreases ammonia level to increase egg production in layers and weight gain in broilers

## FISHES /AQUACULTURE :-

Absorbs toxic gasses and increases Growth rate in aquatic animals

## FEEDING SCHEDULE :-

Large Animal : 20-30 gm. daily

Small Animal : 10-15 gm. daily

**POULTRY** :- 10 gm./100 birds daily

Fishes 1-2 gm per kg feed

or as directed by the veterinarian

जूम-एच पाऊडर

खिलाओ

दुधारू पशुओं का

थनों (लेवा) को बढ़ाओ

## COMPOSITION :

### EACH GM. CONTAINS

Vitamin A	10000 IU
Vitamin D	5000 IU
Vitamin E	10 Mg
Vitamin C	10 Mg
Vitamin H	12 mcg
Selenium	10 mcg



Packing : 1 Kg, 20 Kg. & 25 Kg.

**CATTLE/POULTRY/FISH FEED SUPPLEMENT**



# ZymoVet<sup>+</sup>

Perfect blend of Digestive Enzymes  
& Carminatives for  
**Livestock, Poultry &  
Pet Animals**

## BENEFITS :

- Improve Digestion as it continue NSP Degrading Enzymes
- Greater Feed efficiency
- Better production
- Highly effective with probiotics
- Best in Anorexia & bloat

## FEEDING SCHEDULE :

Cattle 20-50 ml.  
Sheep & Goat : 10-15 ml.  
Poultry : 10-15 ml./100 Birds  
or as directed by the veterinarian



Each 5 ml. Contains :

Diastase (1:2000)	110 mg.
Pancreatin	10 mg.
Papain	50 mg.
Niacinamide	4.75 mg.
Tinc. Nuxvom	0.015 ml.
Tinc. Cardamon	0.075 ml.
Caseln Hydrolysate	250 mg.
Thymol	25 mg.
Conc. Anethi Water	0.01 ml.
Conc. Careway water	0.03 ml.
Oil Ajowan	0.05 ml.
Sorbitol (70%)	q.s.

Packing : 300 ml, 500 ml,  
1 Ltr. & 5 Ltr.

**जाईमोवेट**



**Multi Enzyme liquid for Better Digestion**



To Make Your Animals  
Disease Resist  
Shake Hand with REFIT



An ISO 9001 : 2015 & GMP Certified Co.



+91 87259 42557  
+91 87259 42559



[www.refitanimalcare.com](http://www.refitanimalcare.com)



[info@refitanimalcare.com](mailto:info@refitanimalcare.com)

THANK YOU  
FOR VISITING



[www.refitanimalcare.com](http://www.refitanimalcare.com)

Division of Cattle, Poultry & Aquatic Feed Supplements